



BANCA D'ITALIA
EUROSISTEMA

Temi di discussione

(Working Papers)

The impact of macroeconomic and monetary policy shocks
on the default risk of the euro-area corporate sector

by Marco Lo Duca, Diego Moccero and Fabio Parlapiano

July 2024

Number

1460



BANCA D'ITALIA
EUROSISTEMA

Temi di discussione

(Working Papers)

The impact of macroeconomic and monetary policy shocks
on the default risk of the euro-area corporate sector

by Marco Lo Duca, Diego Moccero and Fabio Parlapiano

Number 1460 - July 2024

The papers published in the Temi di discussione series describe preliminary results and are made available to the public to encourage discussion and elicit comments.

The views expressed in the articles are those of the authors and do not involve the responsibility of the Bank.

Editorial Board: ANTONIO DI CESARE, RAFFAELA GIORDANO, MARCO BOTTONE, LORENZO BRACCINI, MARIO CANNELLA, ALESSANDRO CANTELMO, GIACOMO CARACCILO, ANTONIOMARIA CONTI, ANTONIO DALLA ZUANNA, VALERIO DELLA CORTE, MARCO FLACCADORO, ROSALIA GRECO, ALESSANDRO MORO, STEFANO PIERMATTEI, FABIO PIERSANTI, DARIO RUZZI.

Editorial Assistants: ROBERTO MARANO, MARCO PALUMBO, GWYNETH SCHAEFER.

ISSN 2281-3950 (online)

Designed by the Printing and Publishing Division of the Bank of Italy

THE IMPACT OF MACROECONOMIC AND MONETARY POLICY SHOCKS ON THE DEFAULT RISK OF THE EURO-AREA CORPORATE SECTOR

by Marco Lo Duca*, Diego Moccero* and Fabio Parlapiano**

Abstract

We analyse the impact of macroeconomic and monetary policy shocks on corporate default risk as measured by firms' probabilities of default (PDs) for the four largest euro area countries. We estimate the impact of shocks on one-year PDs using local projections. For the period 2014-19, we find that these shocks significantly affect the dynamics of default risk. A contractionary supply shock leads to a deterioration of firms' riskiness by 10 per cent above the average PD. Similar effects are found for adverse monetary policy shocks. Firms' responses to shocks vary depending on their characteristics and degree of financial constraints. Smaller firms are affected to a larger degree. Firms' outstanding indebtedness and debt repayment capacity are an important transmission channel for these shocks, but the accumulation of cash reserves helps build resilience.

JEL Classification: C23, C55, E43, E52, G33.

Keywords: corporate default risk, demand and supply-driven inflation shocks, monetary policy shocks, local projections.

DOI: 10.32057/0.TD.2024.1460

* ECB.

** Bank of Italy.

Non-technical summary

The Covid-19 pandemic, price spikes in energy and commodity markets, and monetary policy tightening reignited the attention on the consequences of economy-wide shocks for the solvency of non-financial firms. Significant business and supply chain disruptions during the pandemic, together with a decline in demand, have led to a deep economic contraction. In this context, firms made substantial effort to build cash buffers which, coupled with massive support from the monetary, fiscal, and supervisory authorities, helped to avert a liquidity crisis, preventing corporate defaults. The energy and commodity crisis triggered by the Russian invasion of Ukraine challenged again the corporate sector. Production and input costs increased, particularly in energy-intensive sectors, exerting pressure on profit margins. Persistently high energy costs may trigger losses, depleting firms' equity and increasing debt burdens, resulting in higher bankruptcy risk. Finally, increasing global inflation triggered monetary policy tightening which translated into increasing financing costs with implications for firm liquidity and solvency.

Against this background, this paper analyses the transmission of macroeconomic and monetary policy shocks to corporate default risk, as measured by firms' probabilities of default (PDs). We employ the macroeconomic shocks (*i.e.*, demand and supply-driven inflation shocks) computed by Gonçalves and Koester (2022) and monetary policy shocks from Altavilla *et al.* (2019). The former assume that supply shocks affect activity and inflation in opposite directions while demand shocks drive inflation and economic activity in the same direction. The latter estimate monetary policy surprises based on high frequency changes in the yields of various risk-free and risky assets following a monetary policy announcement. We include these shocks in a panel local projection model (Jordà, 2005) to estimate their dynamic impact on euro area non-financial companies' (NFC) probabilities of default. We conducted the empirical analysis at four levels of aggregation: country, country-size of firm, country-sector of firm and firm-level. The source of firms' PDs is Moody's RiskCalc and we focus on the four largest euro area countries: Germany, France, Spain, and Italy. The sample spans the period from the first quarter of 2014 to the fourth quarter of 2019 and includes listed and unlisted NFCs.

Our contribution to the literature is twofold. First, to the best of our knowledge, we are the first ones to study the impact of market-wide economic and funding shocks on a measure of default risk for unlisted firms whose characteristics and access to financing differ from their listed counterparts (Anderson and Cesa-Bianchi, 2022; Palazzo and Yamarthy, 2022). Second, we shed light on the timing, magnitude, and heterogeneity across the spectrum of firms of the effects of macroeconomic and monetary policy shocks on corporate default risk. We document differences in the response of firms' PDs depending on their *ex-ante* financial conditions, thus helping policy makers to understand both the transmission channels of shocks and to design measures aimed at reducing the vulnerability of corporates to shocks.

The main results of our analysis are the following. First, country-level PDs increase markedly following both contractionary supply and monetary policy shocks. The magnitude of the increase is economically significant, accounting for about 10 percent of the average PD in our sample. The response peaks one year after the shock. Unexpectedly, the effect of expansionary demand shocks (*i.e.*, shocks associated with an increase in both economic activity and inflation) are smaller in magnitude and non-significant. Second, the transmission of shocks depends on firms' characteristics. Smaller firms (which are typically financially constrained and reliant on bank lending) are twice more affected. Economic sectors such as construction, real estate, transport, and trade are particularly exposed to demand and supply shocks, while most economic sectors are

affected by shocks to monetary conditions. Third, estimations based on firm-level PDs confirm our results based on country-level PDs. Moreover, we highlight the role of financial frictions in the transmission of shocks with fragile companies (*i.e.*, highly indebted, with a limited debt repayment capacity or younger) being more affected. Importantly, cash reserves provide a partial hedge against shocks which is even more beneficial for highly leveraged companies.

1. Introduction¹

The pandemic of 2020, the energy price spikes in 2022 and monetary policy tightening reignited attention on the consequences of economy-wide shocks for the solvency of non-financial firms. Significant business and supply chain disruptions during the pandemic, together with a decline in demand, led to a deep economic contraction. The increase of corporate indebtedness in combination with weaker corporate profitability prospects raised widespread concerns about the vulnerability of the corporate sector. In this context, firms made substantial effort to build precautionary cash buffers which, coupled with massive support from the monetary, fiscal, and supervisory authorities, helped to avert a liquidity crisis, thereby preventing corporate defaults.² The energy and commodity price spikes triggered by the reopening and further exacerbated by the invasion of Ukraine challenged again the corporate sector. Production and input costs increased, particularly in energy-intensive sectors, exerting pressure again on profit margins. Persistently high energy costs may trigger losses, depleting firms' equity and increasing debt burdens, resulting in higher bankruptcy risk. Higher prices for consumers have hit purchasing power, affecting aggregate demand. Finally, increasing global inflation triggered monetary policy tightening which translated into increasing financing costs, with implications for firms' liquidity and solvency.

Against this background, in this paper we ask the following two questions. First, how do macroeconomic and monetary policy shocks impact corporate default risk? As policy makers design policies to shield corporates from the consequences of adverse shocks, it is of paramount importance to understand how, when and to what extent such shocks propagate to the corporate sector. Second, what role firms' characteristics play in the transmission of such shocks? In this regard, we intend to shed light on the timing, magnitude, and heterogeneity across the spectrum of firms of the effects of these shocks on corporate default risk. We answer these questions by analysing the transmission of macroeconomic and monetary policy shocks to corporate default risk, as measured by firms' probabilities of default (PDs). We employ the macroeconomic shocks, *i.e.* demand and supply-driven inflation shocks computed by Gonçalves and Koester (2022). The authors classify changes in the price of individual components of the HICP index (*e.g.*, food and beverages, clothing, housing, etc.) into supply and demand driven changes based on the direction of shifts in economic activity and inflation: if they move in the same (opposite) direction, the change is classified as demand (supply) driven. For monetary policy shocks, we rely on high frequency changes in the yields of various risk-free and risky assets following a monetary policy announcement (Altavilla *et al.*, 2019). The identification assumptions for such shocks rely on the absence of both confounding factors, due to the narrow window utilized to measure changes in yields, and a market reaction to private information held by the central bank about the future state of the economy; as such they are also defined monetary policy surprises.

We include these shocks in a panel local projection model (Jordà, 2005) to estimate their dynamic impact on euro area non-financial companies' (NFC) probabilities of default up to eight-quarters ahead. We conduct the empirical analysis at four levels of aggregation: country, country-size of the

¹ We thank Alessio de Vincenzo, Emilia Bonaccorsi di Patti and two anonymous referee for useful comments and suggestions. We also thank participants at the European Central Bank (ECB) Corporate Economics Workshop and the Directorate General-Macprudential Policy and Financial Stability Seminar Series, the 5th International Conference on European Studies at ETH Zurich, the 9th Banking Research Network Workshop at Banca d'Italia and the Monetary Policy and Financial Intermediation: Learning from Heterogeneity and Microdata at Collegio Carlo Alberto. The views expressed do not necessarily represent the views of Bdl and the ECB. All remaining errors are our responsibility.

² These measures have prevented financing and rollover risks from materialising, improved access to credit, kept debt servicing costs at low levels and extended the maturity of outstanding debt. See de Bondt *et al.* (2021).

firm, country-economic sector, and firm level. The source of firms' PDs is Moody's RiskCalc and we focus on the four largest euro area countries: Germany, France, Spain, and Italy. The sample spans the period from the first quarter of 2014 to the fourth quarter of 2019.

The literature on the response of corporate riskiness to aggregate shocks in economic, financial, and monetary conditions is ample and dates to the seminal theoretical works of Bernanke and Gertler (1995), Mishkin (1995) and Bernanke *et al.* (1999). Under information asymmetries, monetary and real shocks affect the cost of credit via the values of the assets and the cash flows of potential borrowers (their creditworthiness) and via the amount of credit provided by banks. A number of papers documented the empirical relevance of macroeconomic and monetary policy shocks in explaining corporate defaults since the publication of these studies. Pesaran *et al.* (2006), Bonfim (2009), Lando and Nielsen (2010) and Jacobson *et al.* (2011) focused on macroeconomic shocks. Pesaran *et al.* (2006) employ listed firms with a credit rating from either Moody's or S&P. Lando and Nielsen (2010) and Jacobson *et al.* (2011) focus on actual defaults in the USA and in Sweden, respectively. Gertler and Karadi (2015), Kim and Other (2019), Palazzo and Yamarthy (2022) and Anderson and Cesa-Bianchi (2022) studied the impact of monetary policy shocks on corporate credit spreads or credit default swaps employed as proxies for firms' default risk. Except Kim and Other (2019), the studies focus on the USA. Other studies have highlighted the role of firm heterogeneity in the propagation of shocks. While Palazzo and Yamarthy (2022) employed credit spreads on listed bonds as a measure of default risk, other papers have studied the role of firm heterogeneity in affecting the transmission of shocks on firms' stock prices and activity ratios, such as investments, cash holdings, inventories and sales growth (Ippolito *et al.*, 2018; Jeenas, 2019; Durante *et al.*, 2022).

Our contribution to this literature is fourfold. First, to the best of our knowledge, we are the first ones to study the impact of shocks on default risk for both listed and, in particular, unlisted firms in the euro area, whose characteristics and access to financing differ substantially from their listed counterparts (Anderson and Cesa-Bianchi, 2022; Palazzo and Yamarthy, 2022). In Europe, banks are the main suppliers of external finance while capital markets financing, through firms' listing, mainly owes to large sized firms. As financial constraints tend to soften for larger and listed firms, with the latter being able to raise capital from both private and public markets by issuing securities, our analysis provides insight into a prominent sample of the population of firms of interest. Second, we employ corporate's probability of default as our measure of default risk, by contrast to the existing literature that has employed different proxies for default risk such as credit-default-swaps and bond credit spreads or has focused on stock prices and economic outcomes (investments, cash holdings, inventories, and sales growth, etc.).³ Third, we expand over the existing literature by encompassing different shocks, namely demand, supply and monetary policy. Fourth, we provide estimates for the timing, magnitude, and heterogeneity across the spectrum of firms of the effects of macroeconomic and monetary policy shocks on corporate default risk. We highlight the role of financial frictions by documenting different responses of firms' PDs

³ A thorough and comprehensive comparison of the accuracy of different default forecasting metrics has found limited investigation in the literature due to data limitation; the sample of firms for which it is possible to contemporaneously obtain all default risk metrics (market based, structural and reduced form model) is very narrow. Abinzano *et al.*, (2020) show that market based measures (CDS or bond spreads) tend to outperform other metrics but results are sensitive to: *i*) the type of firms one is interested in and *ii*) the forecasting horizon. CDS and bond spread are typically available for a non-representative sample of the population of firms in an economy, *i.e.* larger firms and with a credit quality standing in the surroundings of the so called investment grade threshold BBB- (Subrahmanyam *et al.*, 2014). For the purpose of our analysis, the use of PD can be considered a more accurate metric compared to market based measures, due to their availability for a larger sample of limited liability company in each country.

depending on their *ex-ante* financial conditions, thus helping policy makers to understand both the transmission channels of shocks and to design measures aimed at reducing the vulnerability of corporates to shocks.

The main results of our analysis are the following. First, for the whole euro area we show that weighted average country-level PDs increase markedly following both contractionary supply and monetary policy shocks. The magnitude of the increase is economically significant, accounting for about 10 percent of the average PD in our sample. The response peaks one year after the shock. In contrast and unexpectedly, the estimated effect of expansionary demand-driven inflation shocks (*i.e.*, shocks associated with an increase in both economic activity and inflation) is smaller in magnitude and tend to be statistically non-significant. Second, smaller firms, which are typically financially constrained and more reliant on bank lending, are twice as much more affected. Economic sectors such as construction, real estate, transport, and trade are particularly exposed to demand and supply shocks, while most economic sectors are affected by shocks to monetary conditions. Third, estimations based on firm-level PDs confirm our main results based on country-level PDs. Moreover, we find that shocks propagate more strongly amongst financially constrained and fragile corporations (*i.e.*, highly indebted or with a limited debt repayment capacity). Importantly, cash reserves provide a partial hedge against shocks which is even more beneficial for highly leveraged companies: notably, following a shock, cash buffers can be used to repay outstanding debt, avoid default and limit refinancing.

The rest of the paper is organized as follows. Section 2 reviews the relevant literature. Section 3 sets out the modelling framework and Section 4 presents and describes the data. Section 5 discusses the results at various levels of aggregation (country, size, sector, and firms). Section 6 concludes.

2. Related literature

The literature on the response of firms to aggregate shocks in economic, financial, and monetary conditions is ample. A first strand dates to the seminal work of Bernanke *et al.* (1999) and studies the impact of the macro-economy, alongside firm-specific factors, in affecting corporate defaults. Since then, a number of papers have documented the empirical relevance of macroeconomic variables (such as GDP, inflation, and interest rates) in explaining corporate defaults that “horse-race” the explanatory power of models obtained with and without macroeconomic factors (Bonfim, 2009; Lando and Nielsen, 2010; and Jacobson *et al.*, 2011). Pesaran *et al.* (2006) link default risk to different macroeconomic shocks and find that equity price shocks have the most significant effect on default risk, followed by oil price shocks.

A second strand of literature studies the transmission of monetary policy shocks to firms’ balance sheets and their financial conditions, starting from the seminal contributions of Bernanke and Gertler (1995) and Mishkin (1995) on the credit channel. The idea is that contractionary monetary policy shocks increase the cost of external financing (due to borrowers’ default risk and information asymmetries) and reduce credit availability for the economy.⁴ The former mechanism, also known as the balance sheet channel of monetary policy, affects firms’ balance sheets directly via increasing interest payments on new debt and outstanding floating-rate debt and lower firms’ collateral value (through decreased asset-prices). It also affects firms indirectly by reducing

⁴ The credit channel of monetary policy also operates through a second mechanisms which predicts a contraction in the supply of bank loans due to a drain in the amount of funds (mostly deposits) available to banks. If loan supply contracts, borrowers will be credit rationed (resulting in higher financing costs), reducing real economic activity.

aggregate demand and firms' revenues. The combined effect of lower revenues and higher costs erodes the firms' net worth and their credit-standing over time.

More recently, Gertler and Karadi (2015) employ monetary policy shocks identified using high frequency surprises around Federal Open Market Committee (FOMC) meetings and find that corporate credit spreads increase when monetary policy is tightened due to credit constraints faced by private borrowers.⁵ Palazzo and Yamarthy (2022) find that firms' default risk (proxied by credit default swaps) increases following a contractionary monetary policy shock during FOMC announcement days. Evidence also suggests heterogeneity in the response to shocks. Palazzo and Yamarthy (2022) find that riskier firms (*ex-ante*) display a stronger sensitivity to shocks. Anderson and Cesa-Bianchi (2022) document that the impact on default risk (measured by credit spreads on listed bonds) is stronger for highly leveraged firms.

Kim and Other (2019) focus on listed firms' corporate bond spreads in the euro area. In contrast with predictions from the credit channel of monetary policy, their study shows that monetary policy easing is associated with an increase in default risk in a low interest rate environment. However, this effect is relevant in the short-run only and it disappears when shocks entail changes in the path of future policy rates (long-run expectations). The authors argue that this is due to the negative news for economic prospects conveyed to market participants when interest rates decline.

The third strand of literature that relates to our paper focuses on the role of heterogeneity in the cross section of firms for the transmission of shocks. For the main euro area countries, Durante *et al.* (2022) investigate the transmission of monetary policy shocks to firms' investment decisions. The authors show that investments decline after a contractionary shock, but the response of investments differs depending on firms' financial constraints (proxied by age) and on the economic sector. Financially constrained (*i.e.*, younger) firms and those in the durable goods sector respond more strongly to monetary policy shocks. Ippolito *et al.* (2018) examine the response of firms' stock prices, cash holdings, inventories, and fixed capital investments to monetary policy shocks. In all cases they find a larger sensitivity to shocks for financially constrained firms. The authors argue that the transmission of shocks operates mostly through existing floating-rate loans that become more expensive when monetary policy is tightened. Jeenas (2019) investigate how NFCs' activity ratios (fixed capital, inventory, and sales growth) respond to high frequency empirically identified monetary policy shocks. Financially constrained firms (highly leveraged or with a low cash balance) experience negative activity ratios following a shock, with the greater disparities occurring 8 to 12 quarters after the shock. It is however the low cash balance that explains the more pronounced contraction in activity ratios, also because these firms record the largest increase in the cost of debt servicing.

Against this background, we contribute to the literature by estimating the impact of macroeconomic and monetary policy shocks on the probability of default of NFCs. This contrasts with the existing literature that used credit-default-swaps as proxies for default risk. Importantly, we extend over the existing literature by encompassing different macroeconomic shocks, namely demand, supply and, monetary policy. We also expand the sample of firms to include both listed and unlisted firms. We shed light on the potential channels through which shocks translate into vulnerabilities for several types of firms. We focus primarily on the role of financial constraints as an amplification mechanism of firms' riskiness and show that default risk worsens after a monetary

⁵ Conventional theoretical models of monetary policy transmission are based on frictionless financial markets and predict that the response of the cost of credit for private borrowers should depend entirely on the expected path of the central bank short-term interest rate.

policy shock for both highly leveraged and low debt service capacity firms. Hence, we provide evidence in favour of the balance-sheet channel of monetary policy, using a novel, large set of firm-level data on PDs estimated using both balance-sheet and market information. Sectors more exposed to cyclical fluctuations are more severely impaired by adverse economic shocks.

3. Modelling the dynamics of default risk

We employ local projections (LP) to investigate the response of firms' PDs to macroeconomic and monetary policy shocks. We obtain demand and supply-driven inflation shocks from Gonçalves and Koester (2022), and monetary policy shocks from Altavilla *et al.* (2019) (see Sub-sections 4.2 and 4.3 below). We then estimate the impact of shocks using a panel dataset by aggregating firm's PDs at various levels: country, country-firm-size, country-firm-sector and firm-level observations. Using different aggregation levels allows us to nail down the role played by heterogeneous countries and firms. We apply weights to individual firms' PDs to restore the proportions of SMEs and large firms in our sample with those in the population for each country.

Our benchmark LP model is as follows:

$$PD_{i,t+h} - PD_{i,t-1} = \alpha_{country,h} + \alpha_{size,h} + \alpha_{sector,h} + \sum_{i=1}^I \beta_{i,h} * shock_t * D_{i,t-1} + \gamma_h X_{country,t-1} + \varepsilon_{i,t+h} \quad (1)$$

where: i is the level of aggregation (country, firm sizes within a country, sectors within a country, and firms), $b=0,1,\dots,8$ indicates quarters following a shock, $X_{country,t-1}$ is a set of time varying macroeconomic variables observed at time (quarter) $t-1$ in each country, $shock_t$ denotes the type of shock at time t (demand, supply and monetary policy) and D_i is a dummy variable taking the value one for each country, size, sector or firms' group. Depending on the aggregation, we perform estimations using country, size, and/or economic-sector fixed effects to capture time-invariant, unobservable factors ($\alpha_{country,size,sector}$). Standard errors are clustered at the individual level (country, firm-size, and sector) and robust. We construct impulse responses based on the estimated $\beta_{i,b}$ coefficients at each horizon.⁶ When including shocks in a LP model, controls are often omitted. However, we decided to include them as they are likely to improve efficiency (see Stock and Watson, 2018; and Plagborg-Møller and Wolf, 2021). In Sub-section 5.2.2, we extend Equation (1) to include interaction terms and account for the role played by firm's characteristics in shaping the response of default risk to shocks. The linear probability model in Equation (1), provides a simplification over possibly more flexible non-linear models (such as probit or logit) which would consistently return changes in PDs censored between 0 and 1. Nonetheless, we rely on linear model for ease of interpretation of its coefficients, for estimation issues related to the rare-event nature of defaults and for the absence of out-of-sample predictive ambition of our exercise.

4. Data

4.1. Probabilities of default

Our sample spans the 2014-19 period and includes listed and unlisted NFCs from the largest four euro area countries (Germany, France, Italy and Spain) for which financial information is available

⁶ We follow Jeenas (2019) and Jordà *et al.* (2015) and regress the cumulative difference between PDs over the right-hand side variables.

in the Orbis database (the main database containing firm-level balance sheet data). Including unlisted firms in the sample is important because their characteristics and access to financing differ from their listed counterparts (Anderson and Cesa-Bianchi, 2022; Palazzo and Yamarthy, 2022). For instance, Cherchye *et al.* (2020) show that financial constraints for euro area private firms are on average 19.6 percent higher than those estimated for publicly listed companies.⁷ Interestingly, there are differences between determinants of listed and unlisted firms' financial constraints: while financial constraints ease as firms' size becomes larger (for both listed and private), financial constraints correlate positively (negatively) with leverage and cash holdings only for private (listed) firms. We use probabilities of default (PDs) at a one-year horizon for active NFCs to measure default risk. Firms under a bankruptcy or liquidation procedure were excluded, as well as firms in the financial and public administration sectors. We draw on Moody's Analytics RiskCalc PDs as our benchmark for firms' default risk in euro area countries.⁸ Due to data limitations, PDs are available only from the year 2014 onwards, preventing us from extending further the analysis to different economic and financial phases. There are two types of PDs available in Moody's RiskCalc: credit cycle adjusted (CCA) and financial statements-only (FSO). We employ CCA PDs, which are available at a quarterly frequency (while FSO are available annually) and provide a more comprehensive and timelier picture of firms' risk.

Moody's estimates the CCA PDs adjusting FSO PDs for the stage of the credit cycle. To that end, Moody's uses quarterly macroeconomic and sectoral data (the average distance-to-default of listed firms in the industry) to compute an adjustment factor: a positive level for this factor indicates risks above the historical average and the FSO's PDs are adjusted upwards. This adjustment allows PDs to closely track the business and financial cycle, therefore resembling a "point-in-time" assessment of default risk.

Importantly, Moody's RiskCalc uses actual defaults as an input to compute the FSO's PDs and according to Moody's, their models are good at predicting actual defaults, both in-sample and out of sample and across industry, size, and different time periods. Such PDs are used by banks for a variety of applications, including in risk management, as an input or threshold on the banks' internal rating models (*e.g.*, for credit approval and underwriting, loan pricing, allowance for loan and lease losses, credit administration, risk reporting and portfolio management) and as an input or benchmark in regulatory capital calculations. Therefore, understanding how PDs react to shocks is important from a financial stability perspective against the backdrop of the possible multifaceted impact on banks.

Firms' coverage is heterogeneous across countries. It is limited in the case of Germany,⁹ while it is larger in the case of Spain, France, and Italy (Table 1). For all countries the shares of SMEs for which PDs are available are well below the ones prevailing in the economy (as reported in the National Business Statistics). To overcome representativeness issues, we apply weights to firms' PDs to restore the proportions of SMEs and large firms in our sample with those reported in the

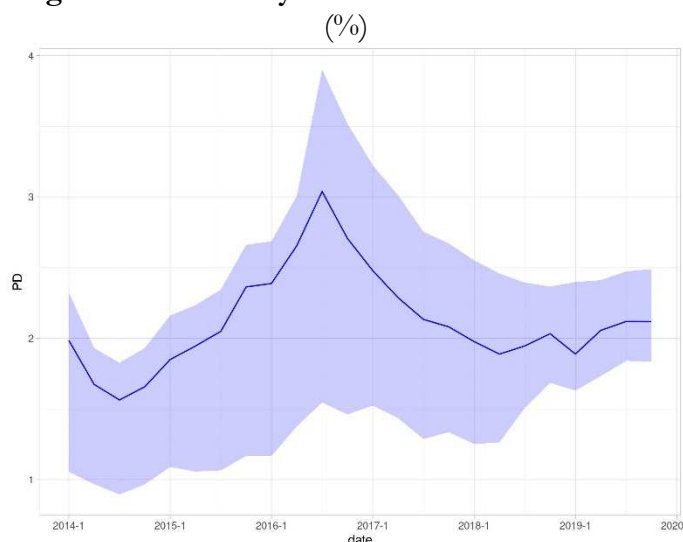
⁷ Cherchye *et al.* (2020) propose a new measure to recover financial constraints from production behaviour; which is therefore applicable to both listed and unlisted companies. Importantly the measure is significantly related to self-reported financial constraints metrics (gathered from survey data).

⁸ Palazzo and Yamarthy (2022) use annualized, physical probabilities of default across multiple maturities from Moody's to compute a credit default swap (CDS) rate's expected loss component.

⁹ Besides Germany's limited coverage, the large contribution of German firms to the economy of the area and the associated importance of the national corporate sector for the inflation dynamics as well as monetary policy decisions are the key factors that led us to keep these firms in the analysis.

national statistics for the population of firms.¹⁰ This approach allows us to obtain estimates that may hold for the population of firms in each country. Figure 1 reports the median PD and its interquartile range for our sample of euro area countries over the period 2014-19. The median PD hovered around 2% over the sample, being lower in 2014 and then increasing in the 2016-17 period.

Figure 1: Probability of default of euro area firms



Notes: The Figure reports the median RiskCalc 1-year PDs for NFCs in France, Germany, Italy, and Spain for the 2014-19 period. The shaded area marks the 1st and 3rd quartile of the distribution of PDs. The expected default frequencies of the firms available in our sample are repositioned to the population of firms in each country using the employment shares by micro, SMEs, and large firms as weights (Table A.1 in the Appendix). Firms under a bankruptcy or liquidation procedure were excluded, as well as firms in the financial and public administration sectors.

Source: Data from Moody's Analytics RiskCalc and Eurostat and author's calculations.

Table 1: Country coverage by firms' size and PD distribution

Country	N Firms		SMEs		Assets (billion)	PDs			w.a. (percent)
	Sample (units)	SBS (units)	Sample (percent)	SBS (percent)		25th (percent)	50th (percent)	75th (percent)	
DE	1,881	2,592,680	38.50	99.54	2.87	0.30	0.48	0.91	0.76
ES	937,151	2,692,956	22.57	99.86	4.81	0.43	1.12	3.50	3.66
FR	1,065,144	2,968,182	16.90	99.84	8.69	0.26	0.66	2.33	1.84
IT	1,048,630	3,616,916	27.75	99.90	5.39	0.55	1.41	2.81	2.18

Notes: The sample PD quartiles are computed from the (unweighted) distribution of PDs for the 2014-19 period while the weighted average PDs use firms' employment shares in the economy as weights. The countries are: DE = Germany, ES = Spain, FR = France, IT = Italy. SBS identifies structural business statistics from Eurostat.

Source: Data from Moody's Analytics RiskCalc, Eurostat Structural business statistics and author's calculations.

¹⁰ The repositioned PDs are obtained as weighed average PDs at the size-class level (*i.e.*, using individual firm's assets over each size class total assets as weights) multiplied by a measure of economic importance of each class in the population of firms. We follow the approach in the ECB Survey on the Access to Finance of Enterprises (ECB, 2022) and use the share of employed people in each firm size-class as a measure of economic importance (sourced from Eurostat's Structural Business Statistics, see Table A.1 in the Appendix). Additionally, one could consider the use of other grouping criteria to check for the representativeness of the sample: using the financial indicators of leverage or cash buffers for instance. However, since these statistics available in the National Accounts are not broken down by size classes or economic sectors, we cannot run this comparison.

4.2. Demand and supply shocks

We compute demand and supply-driven inflation shocks for the euro area as in Gonçalves and Koester (2022), who rely on Shapiro (2022). This approach assumes that supply shocks affect activity and inflation in opposite directions while demand shocks drive inflation and economic activity in the same direction. In more detail, the authors attribute forecasting errors from the modelling of consumer prices and economic activity to supply factors when the errors in prices and activity have different sign. When they have the same sign, the authors attribute the forecasting errors to demand factors. When errors are not statistically significant, the unexpected changes in prices and activity are classified as ambiguous. Therefore, we exclude them from the analysis. Figure A.1 in the Appendix displays the time series of the shocks. Descriptive statistics are presented in Table 2.

4.3. Monetary policy shocks

We use high-frequency monetary policy surprises from Altavilla *et al.* (2019) drawn from the publicly available Euro Area Monetary Policy Event-Study Database (EA-MPD). These series are available at daily frequency and for different asset classes (*i.e.*, overnight index swap -OIS- rate of different maturities, sovereign bonds, equity indices and exchange rates). They report the basis points change for these assets around monetary policy announcements (*i.e.*, from before the press release to after the press conference of Governing Council meetings, the so-called monetary event window). We compute quarterly shocks as the average of shocks in each quarter. We also run regressions using quarterly sum of shocks rather than averages and results do not change qualitatively; in turn the correlation between the series of shocks exceeds 0.95 (results available upon request).

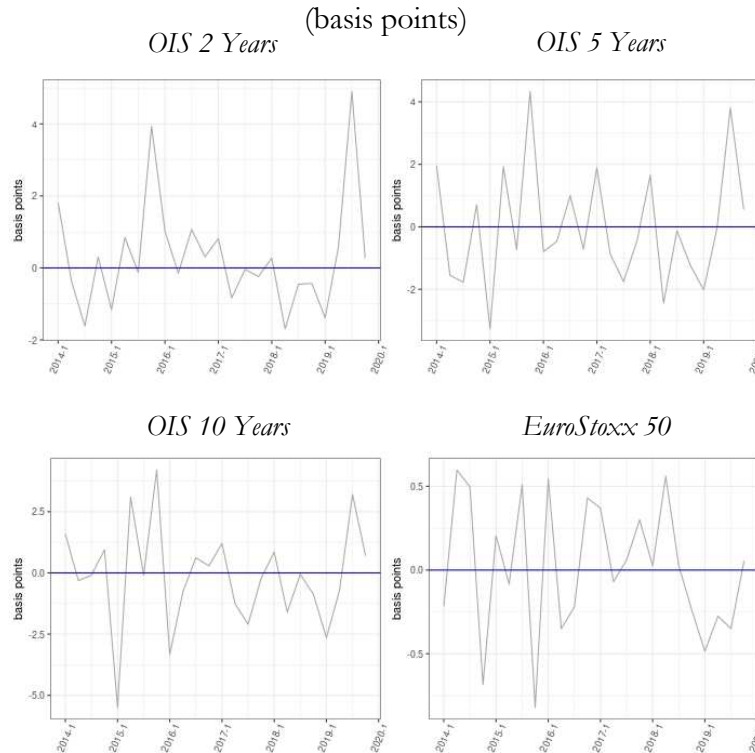
Table 2: Shocks
(basis points)

shocks	mean	standard deviation
demand	0.37	0.08
supply	0.31	0.12
OIS 2 years	0.31	1.52
OIS 5 years	-0.02	1.85
OIS 10 years	-0.14	2.03
Euro Stoxx 50	0.01	0.39

Note: The Table presents descriptive statistics for the macroeconomic and monetary policy shocks obtained by averaging daily observations at each quarter for the 2014-19 period..

Source: Gonçalves and Koester (2022) and Altavilla *et al.* (2019) and author's calculations.

Figure 2: Monetary policy shocks



Note: The Figure reports quarterly averages of daily monetary policy shocks for the 2014-19 period. Daily shocks are aggregated to quarterly frequency by taking simple averages over the shocks falling within the quarter. Benchmark assets are the OIS 2, 5, and 10 years and the Euro Stoxx 50.

Source: Data from Altavilla *et al.* (2019) and author's calculations.

We assess the impact of monetary policy shocks by using different series (Figure 2 and Table 2). These include shocks to the term structure of euro area risk free rates (OIS 2, 5 and 10 years) and to a euro area large firms stock market index (Euro Stoxx 50). As documented in Altavilla *et al.* (2019), measuring shocks from changes in asset prices or yields for different benchmark assets is important to capture the multifaceted effects of policy announcements. In fact, they show that changes in policy rates influence short-term maturities of the curve, forward guidance reaches its peak at intermediate maturities and quantitative easing measures exert maximum impact on long maturities and equity indices. Moreover, changes in stock prices also influence liability costs via changes in the cost of equity.

4.4. Macro and financial controls

We include a set of macroeconomic and financial control variables in Equation (1), as it is common in the modelling of aggregate default rate series (Cathcart *et al.*, 2020). As mentioned before, including control variables is likely to improve efficiency (see Stock and Watson, 2018; and Plagborg-Møller and Wolf, 2021). We include the annual real GDP growth rate, the quarterly change in the unemployment rate, the 2-year government bond yield, the 5-year sovereign CDS spread and the corporate bond yield, all lagged by one quarter. The source of these variables is the ECB Statistical Data Warehouse. Table 3 provides descriptive statistics.

Table 3: Descriptive statistics for the control variables
(percent)

Country	Percentile	GDP growth	Gov. yield short term	Gov. CDS spread	Unemploy. rate	Corporate bond yield
DE	25 th	0.81	-0.69	10.56	3.17	3.27
	50 th	1.67	-0.60	13.39	3.64	3.66
	75 th	2.28	-0.26	17.96	4.06	4.20
ES	25 th	1.75	-0.40	41.00	14.46	3.75
	50 th	2.53	-0.22	66.97	16.33	4.40
	75 th	3.47	0.12	84.96	20.28	5.38
FR	25 th	0.83	-0.63	20.13	8.11	3.29
	50 th	1.33	-0.51	25.91	9.06	3.89
	75 th	2.37	-0.19	38.01	10.17	4.71
IT	25 th	0.07	-0.14	101.72	9.75	2.79
	50 th	0.84	0.03	131.55	10.82	3.55
	75 th	1.62	0.41	163.93	11.72	3.96

Note: The Table presents descriptive statistics for the 2014-19 period for the set of macroeconomic and financial controls included in Equation (1). All controls are lagged. The countries are: DE = Germany, ES = Spain, FR = France, IT = Italy. Source: Data from ECB Statistical Data Warehouse and author's calculations.

5. Results

This section presents the cumulative impulse response functions and discusses the effect of macroeconomic and monetary policy shocks on default risk over an eight-quarter horizon. First, we present the results for a country panel dataset (Sub-section 5.1). The role of firms' heterogeneity is explored in Sub-section 5.2. In particular, Sub-section 5.2.1 presents the results for size and economic sectors. Thereafter, we study the heterogeneity of responses to shocks depending on firms' characteristics focusing on firms' financial constraints using standard proxies such as a firms' age, leverage, and debt servicing capacity (Sub-section 5.2.2).

5.1. The response of default risk at the euro area level

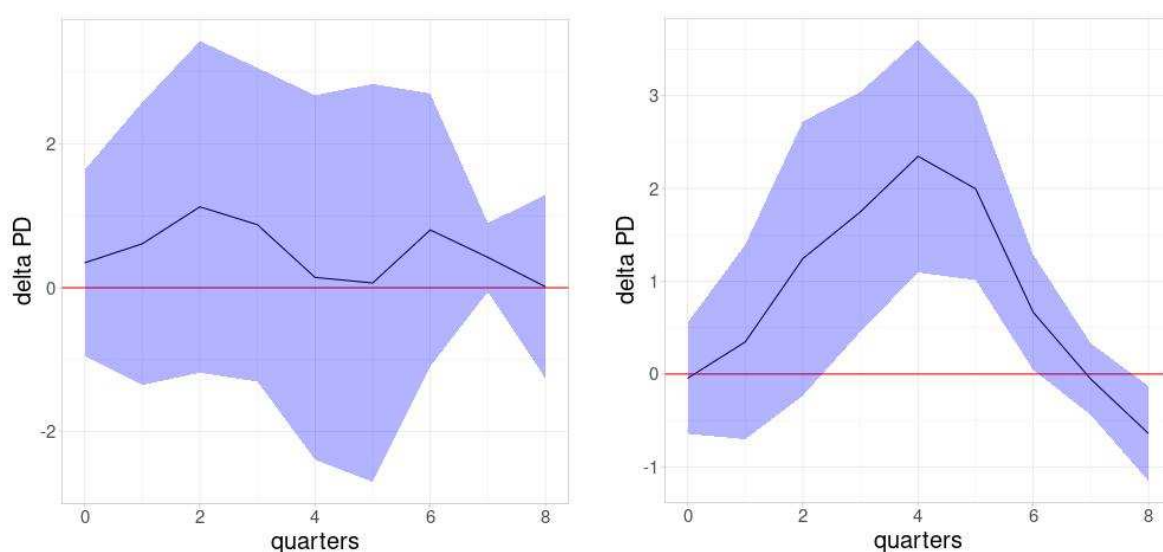
We apply Equation (1) to a country-panel dataset assuming $\beta_{i,h} = \beta_h \forall i$. We aggregate default probabilities at the country level ($i=DE, FR, IT, ES$) employing the weights which allows us to obtain estimates that may hold for the population of firms in each country. Cumulative impulse response functions (*i.e.*, the estimated coefficients) for demand and supply shocks are plotted in Figure 3 using fixed effects at the country level ($\alpha_{country,h}$). We set $\alpha_{size,h} = \alpha_{sector,h} = 0$. The estimated coefficients are rescaled to provide the magnitude of the impact on PDs, in percentage points, of a one standard deviation change in the level of individual shocks.

Figure 3: Response of PDs to demand and supply-driven inflation shocks

(response to a one standard-deviation shock, percentage points)

Panel A: demand shock

Panel B: supply shock



Notes: The Figure reports the cumulative impulse response functions (IRFs) based on the panel local projection model in Equation (1) estimated for the 2014-19 period. The response of PDs (line) is rescaled to a one standard deviation of individual shocks; the shaded area indicates 90 percent confidence bands. Estimates are obtained for the main EA countries using one quarter lagged control variables: annual real GDP growth rate, 2-year government bond yield, 5-year government CDS spread, corporate bond yield and change in unemployment rate. The model also includes country fixed effects. Standard errors are clustered. Weighted average PDs at the country level are obtained using employment shares as weights (see Equation A.1). Source: Data from Moody's Analytics RiskCalc, Gonçalves and Koester (2022), Altavilla *et al.* (2019) and ECB Statistical Data Warehouse and author's calculations.

The transmission of macroeconomic shocks to euro area corporate default risk is heterogeneous between shocks. Unexpectedly, the response to expansionary demand-driven inflation shocks (*i.e.*, those associated with unexpected increases in economic activity and inflation) is not statistically significant. By contrast, the response of firms' PDs to adverse supply shocks (*i.e.*, those associated with a contraction in economic activity and a rise in inflation) is statistically significant and economically substantial. Euro area changes in PDs peak at slightly above 0.2 percentage points after four quarters the shock following a one-standard deviation adverse supply shock. The response is important, accounting for about 10 percent of the mean pooled PD for euro area NFCs.

Figure 4 presents the response of PDs to the monetary policy shocks from Altavilla *et al.* (2019). The Figure reports estimates for shocks to different asset classes: the term structure of risk-free OIS rates (2, 5 and 10 years) and a major euro area stock index (the Eurostoxx 50). The use of different assets classes characterizes the changing nature of market reactions to policy decisions (Wright, 2019) and disentangles the effects of different information announcements (raising policy rates, the announcement of forward guidance and quantitative easing; see Altavilla *et al.*, 2019).

Consistent with the credit channel narrative that predicts that negative monetary policy shocks increase the cost of outstanding floating rate loans and new financial liabilities and worsen prospective firms' solvency, we find that unexpected increases in risk-free rates along the yield curve lead to a rise in firms' PDs (Panel A in Figure 4). The magnitude of this effect is larger for shocks to short-term rates: it peaks at about 0.17 percentage points after four quarters a one-

standard deviation shock to OIS 2 years, compared with 0.13 and 0.10 for the OIS 5 and 10 years, respectively. The greater sensitivity to shorter maturity rates could be due to: the prevalence of variable rate and shorter maturity indebtedness in the corporate sector, a feature that makes the cost of debt service more sensitive to unexpected changes in financing conditions (Ippolito *et al.*, 2018).¹¹ When monetary policy announcements lead to an unexpected increase in equity returns, featuring a scenario where market participants react positively to a policy decision perhaps in association with the easing of financing conditions, NFCs' prospective credit worthiness ameliorate decisively by about 0.12 percentage points after four quarters a one-standard deviation shock. The positive impact on PDs persists longer and peaks at 0.21 percentage points with a delay of about seven quarters. Pesaran *et al.* (2006) documented a strong effect of stock market fluctuations on corporate default risk. However, here we elicit the link between monetary policy shocks, stock market fluctuations and default risk.¹² Importantly, if monetary policy announcements disclose central bank (private) information about future states of the economy, the stock market reaction could also reflect such information content. So as to disentangle the case of informative monetary policy shocks from the others, we estimate the impact of monetary policy shocks to OIS 2 years only when shocks to the *Euro Stoxx 50* have opposite sign. Results do not change qualitatively and confirm our main findings.

Overall, the results regarding the negative effect of tighter monetary conditions on default risk point to the role of debt (new and outstanding loans) for the propagation of such shocks. Moreover, it is interesting to compare how these results for monetary policy shocks display narrower confidence bands around the average (and significant) effect with respect to the macroeconomic shocks. Arguably, this result could be due to the fact that monetary policy shocks are identical at the euro area level while this is not necessarily the case for demand and supply driven-inflation shocks which depend, in turn, on country specific inflation and economic activity dynamics.

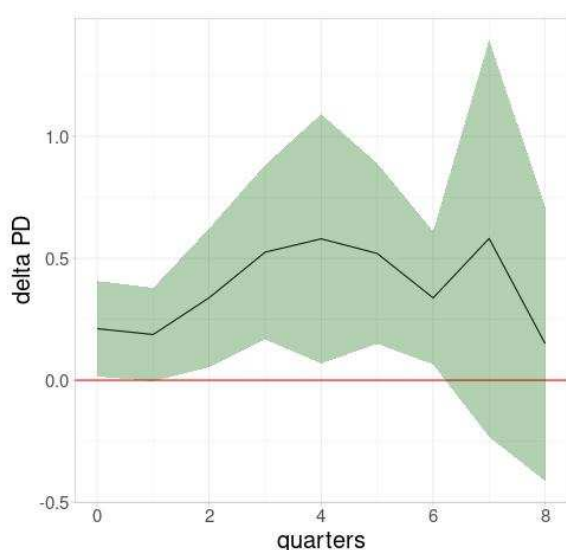
¹¹ The floating rate channel hypothesis (Ippolito *et al.*, 2018) suggests that monetary policy shocks can affect firms' financial strength by draining internal cash resources due to increasing cost for debt servicing of existent loans (and not only for the new loans as predicated by the credit channel hypothesis). We argue that this is a particularly relevant channel as most corporate loans from banks feature floating interest rates.

¹² The prominent effect of changes in short-term rates related to monetary policy announcements is confirmed when using shocks to domestic sovereign bond yields from Altavilla *et al.* (2019). The magnitude of the effect is however smaller, but we observe a similar pattern along the maturity term structure as with the OIS rates. Results are available from the authors upon request.

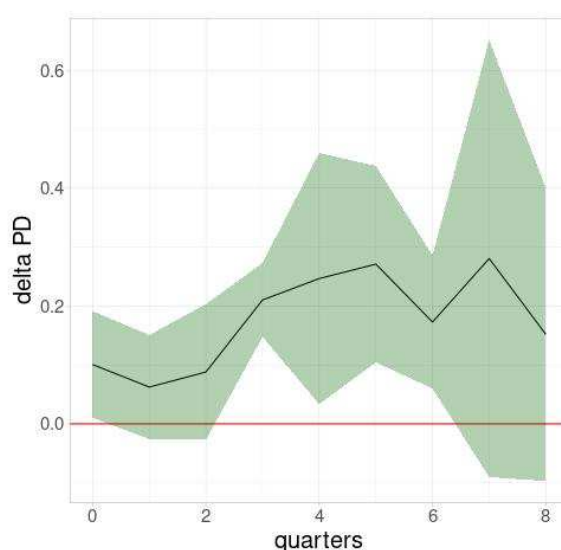
Figure 4: Response of PDs to monetary policy shocks

(response to a one standard-deviation shock, percentage points)

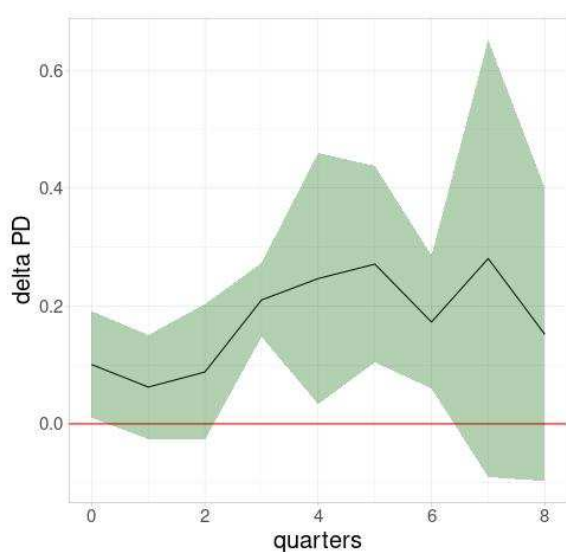
Panel A: OIS 2 year



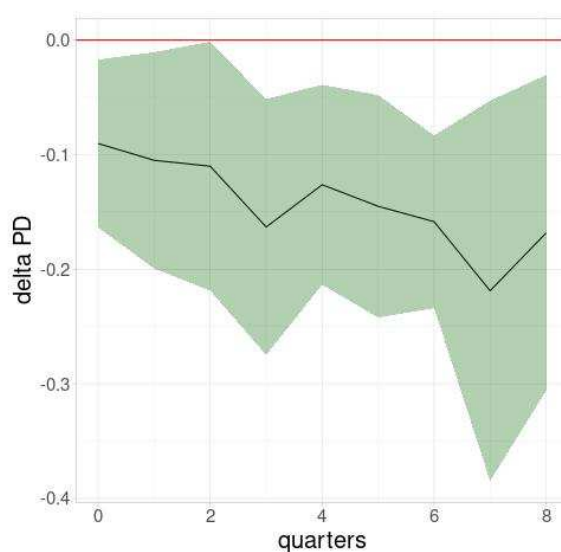
Panel B: OIS 5 year



Panel C: OIS 10 year



Panel D: Euro Stoxx50



Notes: The Figure reports the cumulative impulse response functions (IRFs) based on the panel local projection model in Equation (1) estimated for the 2014-19 period. The response of PDs (line) is rescaled to a one standard deviation of individual shocks; the shaded area indicates 90 percent confidence bands. Estimates are obtained for the main EA countries using one quarter lagged control variables: annual real GDP growth rate, 2-year government bond yield, 5-year government CDS spread, corporate bond yield and change in unemployment rate. The model also includes country fixed effects. Standard errors are clustered. Weighted average PDs at the country level are obtained using employment shares as weights (see Equation A.1).

Source: Data from Moody's Analytics RiskCalc, Altavilla *et al.* (2019) and ECB Statistical Data Warehouse and author's calculations.

5.2. Exploring firms' heterogeneity

5.2.1. Firm size and economic sectors

In this section, we examine the role of heterogeneity by estimating the dynamic reaction of firms' PDs according to size and economic sector. We estimate Equation (1) on weighted average PDs,

using firms' assets in the same group (*i.e.*, size, or sectoral group within each country) as weights, leading to a country-size and country-sector panel datasets. We focus on three firm sizes (micro, SMEs, and large firms) and eight economic sectors. The dummy variable D_i in Equation (1) takes the value one for each of the elements in these two groups, where i varies from 1 to 3 and 1 to 8, respectively. Firms are classified by size using the European Commission's thresholds on asset values (less than EUR 2 million for micro, between EUR 2 million and 43 million for SMEs and more than EUR 43 million for large firms). See Table A.2 in the Appendix for more details regarding the classification of sectors. In the first regression we set $\alpha_{\text{sector},h} = 0$, while in the second one we set $\alpha_{\text{size},h} = 0$.

Figure 5 presents the response of PDs by firm size to a one standard deviation shock. As in the case of the country level aggregation, the shocks have significant effects on firms' default risk. Additionally, we uncover significant differences depending on firms' sizes. The latter is usually employed as proxy for financial constraints and, as such, greater sensitivity of smaller firms to shocks would provide evidence in favour of the financial accelerator – *i.e.* the view that financial frictions can amplify the response of the economy to shocks. Supply shocks hit more decisively smaller firms, probably due to their higher sensitivity to fluctuations which could depend upon their lower capacity to adapt to rapid cyclical changes (*i.e.*, lower export share or capacity to adapt to technological shocks; panels A and B in Figure 5). A one-standard deviation contractionary supply shock increases micro firms' PDs by twice as much as for their larger counterparts (about 0.26 percentage points compared with 0.12 percentage points) four quarters after the shock.¹³ In contrast, with the exception of larger firms, demand shocks have an effect statistically not different from zero. The estimated increase in default risk for larger firms in association with expansionary demand shocks is somewhat counterintuitive. As a possible explanatory factor, Crouzet *et al.*, (2020) document that larger firms feature lower investment elasticity to economic expansion which could hinder their financial strength; a thought investigation of the mechanisms behind this result however falls outside the scope of the paper.

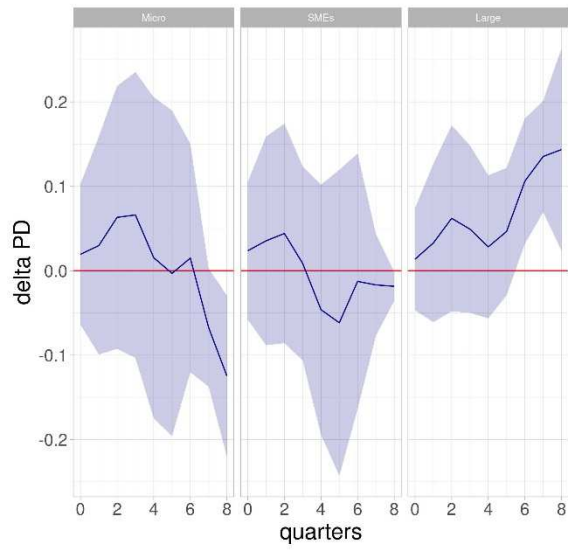
Consistent with these findings, our results also suggest that monetary policy shocks are transmitted more markedly to smaller firms, which tend to be financially constrained (panels C to E in Figure 5). A one-standard deviation tightening monetary policy shock (measured using OIS 2-year yields) entails a 0.26 percentage point increase in the default risk of micro firms. This is a three-fold increase with respect to the impact on the large ones (0.09 percentage points). This result is also observed along shocks to the yield curve. As observed when presenting the aggregate euro area results in Subsection 5.1, the impact of the shorter end of the yield curve is stronger than that one of longer maturities. This result applies to all firm sizes.

¹³ Smaller firms have, on average, higher PD and as such the larger magnitude of the increase following a contractionary supply shock may not necessarily signal a relative greater impact for this category. We confirm that this is not the case since the increase in smaller firms' PD weigh relatively more even on their average PD (12 percent) compared to the larger ones (7 percent).

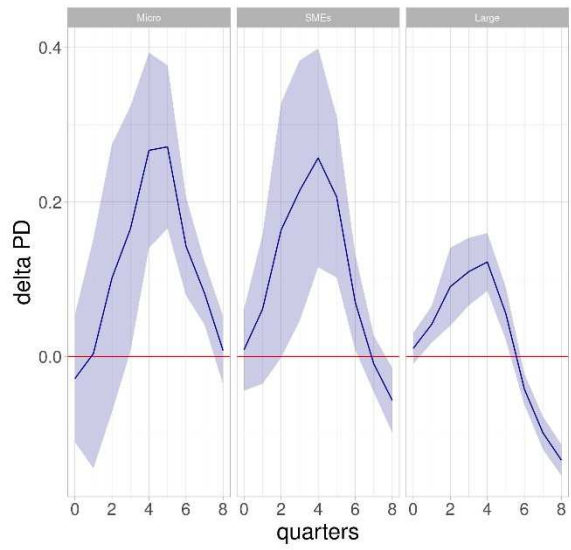
Figure 5: Response of PDs to shocks by firm size

(response to a one standard-deviation shock, percentage points)

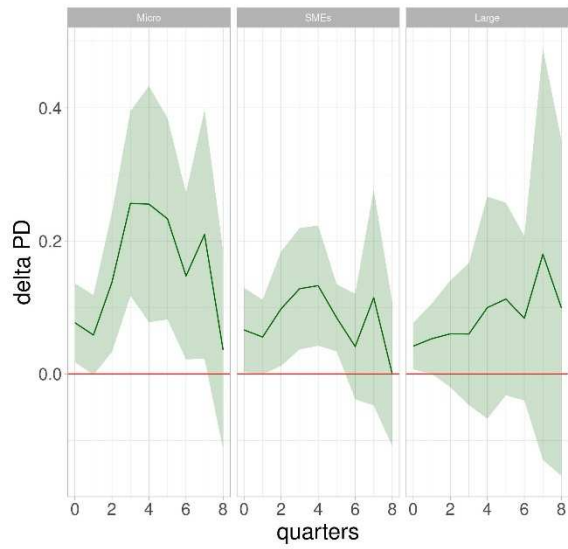
Panel A: demand shock



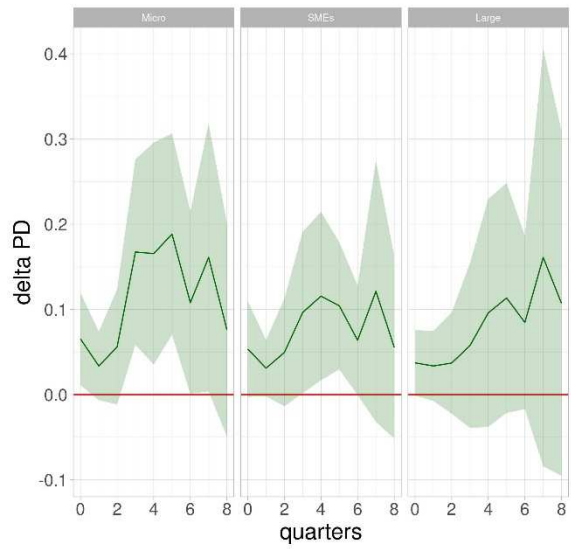
Panel B: supply shock



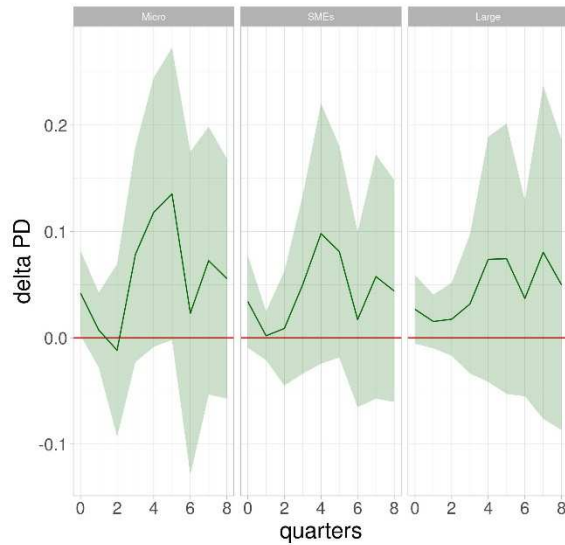
Panel C: monetary policy shock OIS 2y



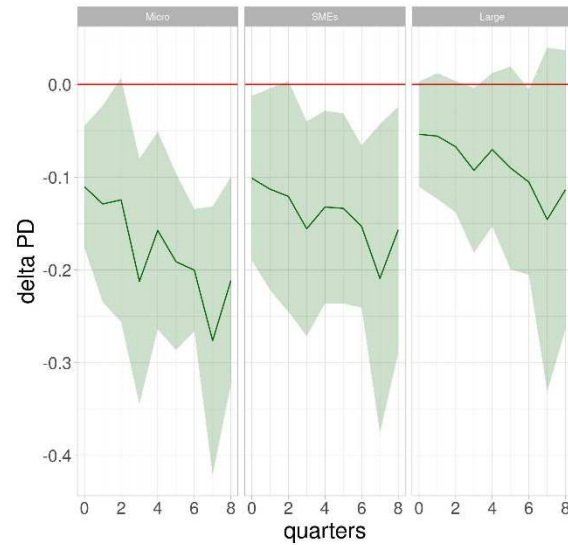
Panel D: monetary policy shock OIS 5y



Panel E: monetary policy shock OIS 10y



Panel F: monetary policy shock Euro Stoxx 50



Notes: The Figure reports the cumulative impulse response functions (IRFs) based on the panel local projection model in Equation (1) estimated for the 2014-19 period. The response of PDs (line) is rescaled to a one standard deviation of individual shocks; the shaded area indicates 90 percent confidence bands. Estimates are obtained for the main EA countries using one quarter lagged control variables: annual real GDP growth rate, 2-year government bond yield, 5-year government CDS spread, corporate bond yield and change in unemployment rate. The model includes country and firm size fixed effects. Standard errors are clustered. Country-size classes weighted average PDs are obtained using a firm's total assets over total assets of the size class as weights.

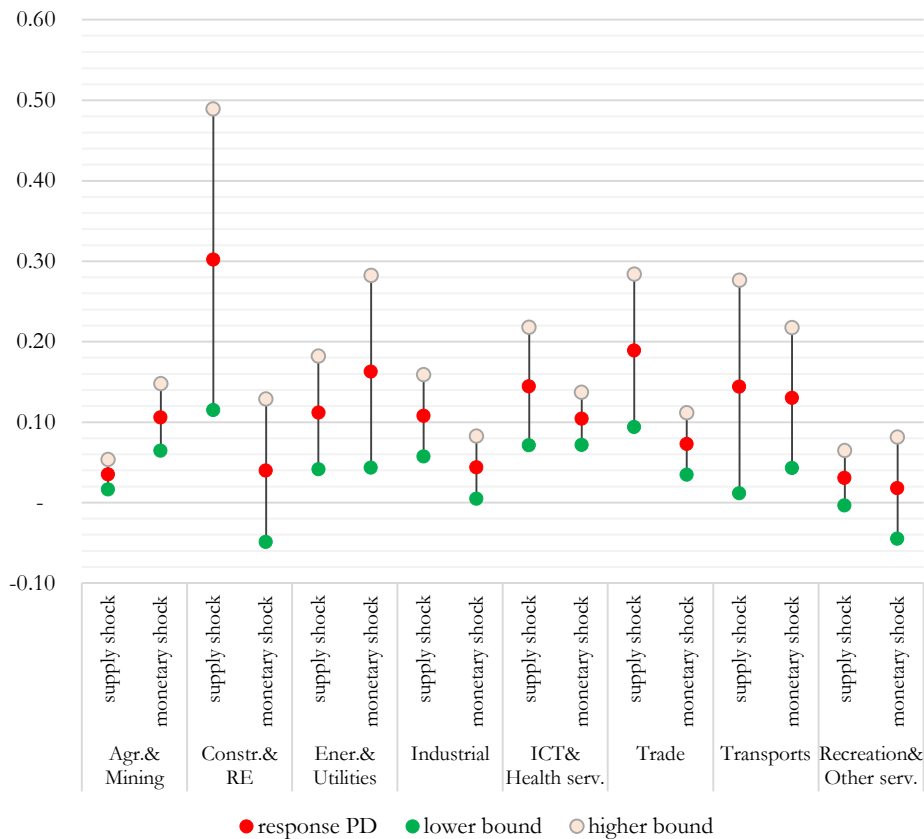
Source: Data from Moody's Analytics RiskCalc, Gonçalves and Koester (2022), Altavilla *et al.* (2019), ECB Statistical Data Warehouse and author's calculations.

Figure 7 reports the response of PDs at the sectoral level to supply and monetary policy shocks (for the OIS 2-year rate). Selected $\beta_{i,h}$ coefficients for the horizon $h = 4$ were multiplied by one standard deviation of individual shocks. We estimate the model using country-sectors fixed effects. Figure A.2 in the Appendix reports the full structure of impulse response functions.

The transmission of macroeconomic shocks is remarkably uneven across economic sectors. Sectors where the estimated impact of supply shocks is large are construction and real estate, trade, transport, and ICT. These sectors are strongly linked to the economic cycle and these firms occupy key roles in supply chains. Regarding the monetary policy shock, in most cases the impact is similar. However, for energy, utilities and transport, the impact is stronger.

Figure 6: Response of firms' PDs by sectors to selected shocks

(response to a one standard-deviation shock, percentage points)



Notes: The Figure reports the response of PDs to individual shocks estimated from the panel local projection model in Equation (1) for the 2014-19 period. The response of PDs four quarters ahead is rescaled to a one standard deviation of individual shocks. Estimates are obtained for the main EA countries using one quarter lagged control variables: annual real GDP growth rate, 2-year government bond yield, 5-year government CDS spread, corporate bond yield and change in unemployment rate. The model includes country and sector fixed effects. Standard errors are clustered. Country-sector weighted average PDs are obtained using a firm's total assets over total assets of the size class as weights. The lower and upper bounds represent the 90 percent confidence interval of the response of the PD. Firms are assigned to economic sectors using the statistical classification of economic activities in the European Community (NACE classification): (A, B) agriculture and mining, (C) industrial, (D, E) energy and utility, (F, I) construction and real estate, (G) trade, (H) transportation, (I, R, S) tourism, recreation other services, (J, M, N, Q, P) information, scientific and health services.

Source: Data from Moody's Analytics RiskCalc, Gonçalves and Koester (2022), Altavilla *et al.* (2019), ECB Statistical Data Warehouse and author's calculations.

5.2.2. Firm level results

In this section, we use individual firms' PDs matched with balance sheet information to estimate how the propagation of macroeconomic and monetary policy shocks to firms' PDs differs depending on their characteristics. We perform regressions on a stratified sample¹⁴ of euro area corporates controlling for firms' observable and unobservable time-invariant characteristics, as well as time-varying balance-sheet items. We provide results on the effect of different shocks using

¹⁴ The sample is obtained using a stratified random sampling approach. For each country, about 100.000 firms are drawn randomly from size classes (micro, SMEs and large firms) using the proportion of firms in each size class from the reference population to derive the number of firms to be drawn from strata.

our main Equation (1), with i being the index for individual firm PDs. To account for the different role played by firms' characteristics we augment Equation (1) as follows:

$$PD_{i,t+h} - PD_{i,t-1} = \sum_{j=1}^3 \alpha_j + \beta_{1,h} * shock_t + \beta_{2,h} * shock_t * D1_{i,t-1} + \beta_{3,h} * shock_t * D1_{i,t-1} * D2_{i,t-1} + \gamma_h X_{country,t-1} + \epsilon_{i,t+h} \quad (2)$$

where D_i is a dummy variable used to approximate (1) financial constraints of firm i (low debt servicing capacity or young age and high leverage) or to indicate (2) the availability of hedges against financial constraints (high cash buffers), α_j is a set of country, sector and size-class fixed effects. Due to the large size of the dataset, we perform regressions using a sample of firms for each country, stratified by size classes, and using fixed effects at the country, firm-size and sector level.¹⁵

Firstly, we replicate estimates based on country-level PDs by imposing $\beta_{2,h} = \beta_{3,h} = 0$ in Equation (2); Table 3 presents the results for two horizons: $h=4$ and 8 . The dynamic effect of expansionary demand shocks on firm-level PDs is highly volatile and statistically non-significant. Adverse supply shocks lead to a significant deterioration in firms' default risk in the short run; following a one-standard deviation supply-driven inflation shock (0.12) average PDs decline by about 10 percentage points (0.12*0.02). Contractionary monetary policy shocks also impair firms' creditworthiness for several quarters; a one-standard deviation shock in OIS 2 years (1.52) leads to an 8 percentage points drop in average PDs (0.0012*1.52). These results are consistent with our previous findings obtained using a less computationally intensive procedure based on country-level weighted average PDs.

¹⁵ For each individual country (except Germany), the size of the panel includes more than 400.000 quarterly observations from 2014 to 2019.

Table 3: Firm level IRFs

Variable	h = 4	h = 8
demand_shock_hicp	-0.0022 (0.0034)	0.0078 (0.0029)
supply_shock_hicp	0.0206 *** (0.0007)	-0.0023 (0.0014)
mon_policy_shock_OIS_2y	0.0012 ** (0.0002)	0.0004 ** (8.89e-5)
mon_policy_shock_OIS_5y	0.0008 *** (4.32e-5)	0.0006 *** (5.31e-5)
mon_policy_shock_OIS_10y	0.0005 *** (1.48e-5)	0.0003 *** (6.16e-6)
mon_policy_shock_STOXX50	-0.0039 ** (0.0004)	-0.0046 ** (0.0006)
<i>Fixed-Effects:</i>		
<i>countryisocode</i>	Yes	Yes
<i>size</i>	Yes	Yes
<i>nacerev2corecode4digits</i>	Yes	Yes
S.E.: Clustered	by: coun. & size & nace.	by: coun. & size & nace.
Observations	2,127,965	1,601,526

Notes: The Table provides estimates of the of the panel local projection model in Equation (2) for the 2014-19 period. Estimates are obtained from a sample of about 100.000 firms for each country (except for Germany) using one quarter lagged control variables: annual real GDP growth rate, 2-year government bond yield, 5-year government CDS spread, corporate bond yield and change in unemployment rate. The model includes country, firm size class and sectoral fixed effects. Standard errors are clustered. Robust standard errors in parentheses. *, **, and *** indicate significance at the 10%, 5%, and 1% level, respectively. Source: Data from Moody's Analytics RiskCalc, Gonçalves and Koester (2022), Altavilla *et al.* (2019), ECB Statistical Data Warehouse and author's calculations.

Secondly, we assess the role of financial constrains in the transmission of shocks using a set of proxy variables: *i)* Young age: young firms being less than ten years old since foundation (Durante *et al.*, 2020); *ii)* High leverage: leverage ratio (liabilities to total liabilities plus shareholder funds) above the 75th percentile threshold of the distribution computed for each year at a granular sectoral classification (NACE 4-digits); and *iii)* Low debt servicing capacity: debt service ratio (interest expenses to earnings before interest taxes, amortisation and depreciation, EBITDA) above the 75th percentile threshold of the distribution, as before. We also look at potential hedges against financial constraints such as high cash holdings (ratio of cash items to total assets above the 75th percentile threshold of the distribution, as before).

In Figure 8 and Figure 9 we focus on the role of leverage and cash holdings using both features either as continuous indicator or as dummy variables. The results for the full set of proxies for financial constraints are reported in the Appendix (Table A. to Table A.6).

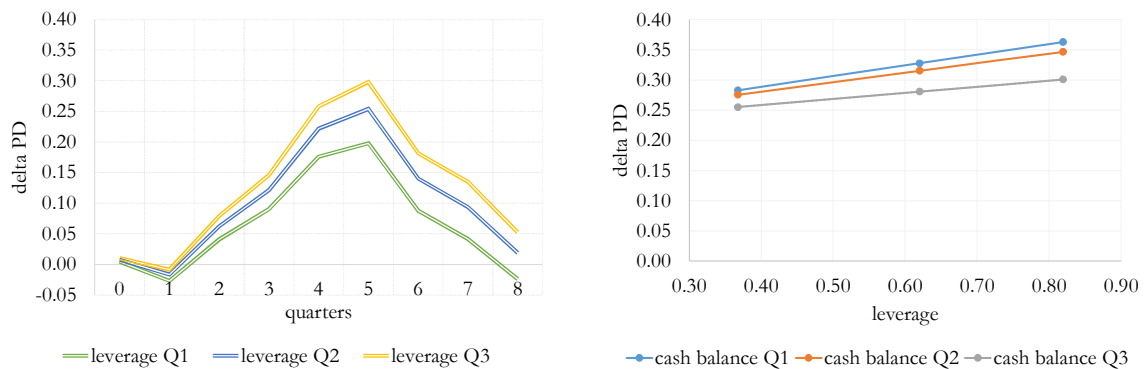
Supply shocks lead to a deterioration in default risk which is stronger for more leveraged firms: for highly leveraged firms (3rd quartile of the distribution) the estimated increase in PDs, 4 quarters after the shock, is about 1 and half times stronger with respect to less leveraged firms (1st quartile of the distribution; 0.26 and 0.18 p.p.) (Figure 8 – Panel A, left hand side Figure). Firms with low debt repayment capacity are also more affected: a two-fold increase in their PDs is projected 4 quarters after the shock (Table A.6). Holding constant corporate indebtedness, the availability of cash reserves mitigates the negative impact of shocks: high cash balances (third quartile of the distribution) shield more highly leveraged firms. Firms' in the high leverage bucket experience an increase in PD by 0.36 and 0.30 p.p. going from low to high cash holdings respectively, accounting for a relative advantage of 17 percent.

Monetary policy shocks (OIS 2-year rate) have an impact on PDs that is increasing in firms' leverage: highly leveraged firms are two and half times more responsive than firms with less leverage (0.29 and 0.11 p.p.) (Figure 8 – Panel B, left hand side Figure). In contrast, firms with lower debt repayment capacity do not respond more to the unexpected tightening of monetary policy. Cash buffers still provide a hedge against monetary shocks: firms' in the high leverage bucket experience an increase in PD by 0.25 and 0.20 going from low to high cash buffers, accounting for a relative advantage of 22 percent. This relative advantage from holding cash for high debt firms could reconcile with previous findings in Bottero and Schiaffi (2022). The authors show that when the yield curve steepens in response to a monetary policy tightening, holding cash becomes costlier (the trade-off between cash holdings and returns from investments increases) and those borrowers that maintain higher cash buffers obtain better financing terms from their lenders (which attribute higher value to firms' cash holdings).

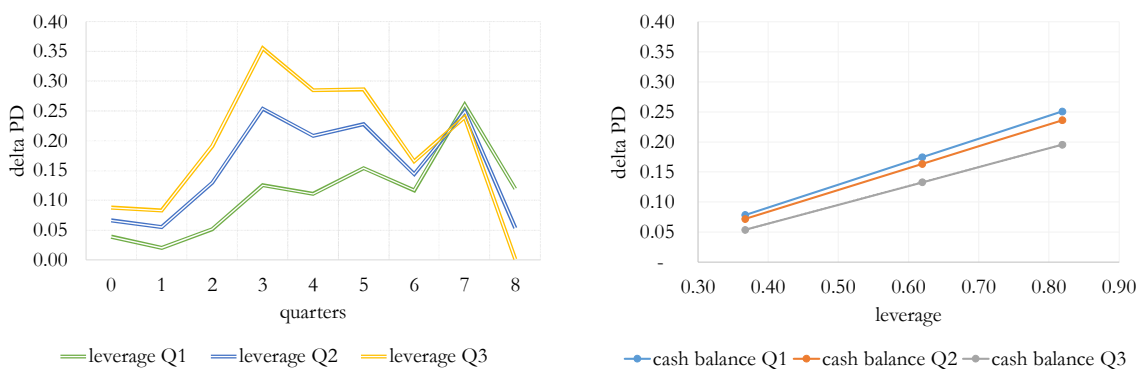
Figure 7: The role of leverage and cash holdings

(response to a one standard-deviation shock, percentage points)

Panel A: supply shock – leverage and cash holdings



Panel B: monetary policy shock (OIS 2 y) – leverage and cash holdings



Notes: The Figure reports the response of PDs to individual shocks estimated from the panel local projection model in Equation (2) for the 2014-19 period using firms' leverage, cash holdings and their interaction in $t-1$ as regressors. The left-hand panel illustrates the dynamic response of PDs, rescaled to a one standard deviation of individual shocks, for firms with leverage equalling the 1st to 3rd quartile of the distribution. The right-hand panel shows the response of PDs 4 quarters after the shock for firms in different quartiles of leverage and cash balance. Estimates are obtained for the main EA countries using one quarter lagged control variables: annual real GDP growth rate, 2-year government bond yield, 5-year government CDS spread, corporate bond yield and change in unemployment rate. The model includes country, firms' size, and sector fixed effects. Standard errors are clustered.

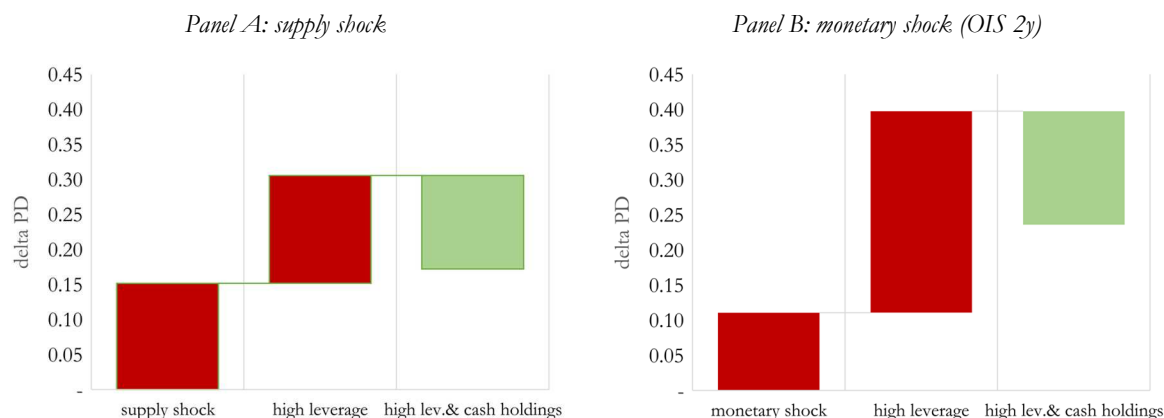
Source: Data from Moody's Analytics RiskCalc, Gonçalves and Koester (2022), Altavilla *et al.* (2019), ECB Statistical Data Warehouse and author's calculations.

In Figure 9 we single out the impact of shocks for the sub-group of fragile firms which are most likely to face financial constraints (*i.e.*, those with leverage above the third quartile). For financially

constrained firms we estimate a one-fold (three-fold) increase in delta PDs following a one standard deviation supply (monetary) shock after four quarters.

Figure 8: The role of leverage in the response of firms' PDs to shocks

(response to a one standard-deviation shock, percentage points)



Notes: The Figure reports the response of PDs to individual shocks estimated from the panel local projection model in Equation (2) for the 2014-19 period with $D_i = 1$ for high leverage firms or high cash firms. The response of PDs after four quarters is rescaled to a one standard deviation of individual shocks. Estimates are obtained for the main EA countries using one quarter lagged control variables: annual real GDP growth rate, 2-year government bond yield, 5-year government CDS spread, corporate bond yield and change in unemployment rate. The model includes country, firms' size, and sector fixed effects. Standard errors are clustered. Source: Data from Moody's Analytics RiskCalc, Gonçalves and Koester (2022), Altavilla *et al.* (2019), ECB Statistical Data Warehouse and author's calculations.

The availability of cash buffers to credit constrained firms builds resilience against such shocks. We explore this hedging channel of cash holdings in the interaction term ($\beta_{3,h} * shock_t * D1_{i,t-1} * D2_{i,t-1}$) that captures the response to shocks of financially constrained, but cash rich firms. Estimates indicate that highly leveraged firms can shield large increases in default risk by as much as one third if their cash balance stands out from their industry peers, at least in the case of adverse supply shocks.¹⁶

Our results for the dynamic response of corporate default risk to monetary shocks are overall consistent with previous studies on the role of financial constraints. More opaque or riskier firms react more strongly (Ippolito *et al.*, 2018; Durante *et al.*, 2022; Palazzo and Yamarthy, 2022), but liquid asset holdings may partially shield exposure to negative shocks (Jeenas, 2019).

6. Conclusion

This paper investigates the impact of macroeconomic shocks, stemming from unanticipated changes in demand and supply-driven inflation shocks, and monetary policy shocks, on default risk of non-financial firms in four large euro area economies, namely Germany, Spain, France, and Italy.

We include in our sample also unlisted limited liabilities companies and use individual firm PDs to measure their riskiness. As policy makers design policies to shield corporates from the

¹⁶ In the case of monetary policy shocks, estimates of the hedging role of cash provide significant results only up to 3 quarters after the shock. The magnitude and consistency of results across different types of shocks (OIS 2, 5, and 10 years) and proxies of financial constraints (debt servicing capacity) still lead us to report this result on the hedging role of cash against monetary policy shocks.

consequences of adverse shocks, it is of paramount importance to understand how, when and to what extent such shocks propagate to the corporate sector.

We find that supply shocks exert significant effects on firms' default risk. Differences amongst firms' size classes and economic sectors emerge, due to their different capacity to shield the effects of shocks as well as to their degree of exposure to aggregate fluctuations.

Monetary policy shocks also affect the default risk of euro area corporates. Fragile firms characterized by higher indebtedness and lower debt servicing capacity appear more sensitive to shocks, but cash buffers can help mitigate the impact on PDs.

References

- Abinzano, I., Gonzalez-Urteaga, A., Muga, L., Sanchez, S., 2020. Performance of default-risk measures: the sample matters. *Journal of Banking & Finance*, Vol. 120, 105959, p.p. 1-17.
- Altavilla, C., Brugnolini, L., Gürkaynak, R., Motto, R., and Ragusa, G., 2019. Measuring euro area monetary policy. *Journal of Monetary Economics*, Vol. 108, p.p. 162-179.
- Anderson, G., and Cesa-Bianchi, A., 2020. Crossing the credit channel: credit spreads and firm heterogeneity. *Working Paper*, No. 2020/267, International Monetary Fund.
- Bernanke, B.S., and Gertler, M., 1995. Inside the Black Box: The Credit Channel of Monetary Policy Transmission. *Journal of Economic Perspectives*, Vol. 9(4), p.p. 27-48.
- Bernanke, B.S., Gertler, M., and Gilchrist, S., 1999. The financial accelerator in a quantitative business cycle framework. *Handbook of Macroeconomics*, in J. B. Taylor & M. Woodford (ed.), Edition 1, Vol. 1, Ch. 21, p.p. 1341-1393, Elsevier.
- Bonfim, D., 2009. Credit risk drivers: Evaluating the contribution of firm level information and of macroeconomic dynamics. *Journal of Banking & Finance*, Vol. 33 (2) p.p. 281-299.
- Bottero, M., and Schiaffi, S., 2022. Firm liquidity and the transmission of monetary policy. *Working Paper*, Vol. (1378), Banca d'Italia.
- Cathcart, L., Dufour, A., Rossi, L., Varotto, S., 2020. The differential impact of leverage on the default risk of small and large firms. *Journal of Corporate Finance*, Vol. 60.
- Cherchye, L., De Rock, B., Ferrando, A., Mulier, K., Verschelde, M. 2020. Identifying financial constraints. *ECB Working Paper Series*, No 2420 / June 2020.
- Crouzet, N., Mehrotra, N. R., 2020. Small and Large Firms over the Business Cycle. *American Economic Review*, Vol. 110 (11) p.p. 3549-3601.
- De Bondt, G., Gieseck, A., Nicoletti, G. and Tujula, M., 2021. Non-financial corporate health during the pandemic. *Economic Bulletin*, Issue 6/2021, European Central Bank.
- Durante, E., Ferrando, A., Vermeulen, P., 2022. Monetary policy, investment and firm heterogeneity. *European Economic Review*, Vol. 148.
- ECB, 2022. Survey on the access to finance of enterprises. Methodological information on the survey and user guide for the anonymised micro dataset, December.
- Gertler, M. and Karadi, P., 2015. Monetary Policy Surprises, Credit Costs, and Economic Activity. *American Economic Journal: Macroeconomics*, *American Economic Association*, Vol. 7(1), p.p. 44-76.
- Gonçalves, E. and Koester, G., 2022. The role of demand and supply in underlying inflation – decomposing HICPX inflation into components. *Economic Bulletin Boxes*, Vol. 7, European Central Bank.
- Ippolito, F., Ozdagli, A.K., Perez-Orive, A., 2018. The transmission of monetary policy through bank lending: The floating rate channel. *Journal of Monetary Economics*, Vol. 95, 2018, p.p. 49-71.

- Jacobson, T., Lindé, J. and Roszbach, K., 2011. Firm default and aggregate fluctuations. *International Finance Discussion Papers*, Nr. 1029, Board of Governors of the Federal Reserve System.
- Jeenas, P., 2019. Monetary policy shocks, financial structure, and firm activity: A panel approach. *Working paper*.
- Jordà, Ò., 2005. Estimation and Inference of Impulse Responses by Local Projections. *American Economic Review*, Vol.95, No. 1, p.p. 161-182.
- Jordà, Ò., Schularick, M. and Taylor, A.M., 2015. Betting the house. *Journal of International Economics*, Vol. 96(S1), p.p. 2-18.
- Kim, C. H., and Other, L., 2019. The Short-run effect of monetary policy shocks on credit risk. *Discussion Papers*, No. 1781, German Institute for Economic Research.
- Lando, D., and Nielsen, M.S., 2010. Correlation in corporate defaults: Contagion or conditional independence?. *Journal of Financial Intermediation*, Vol. 19(3), p.p. 355-372.
- Mishkin, F.S., 1995. Symposium on the Monetary Transmission Mechanism. *Journal of Economic Perspectives*, Vol. 9(4), p.p. 3-10.
- Palazzo, B., Yamarthy, R., 2022. Credit risk and the transmission of interest rate shocks. *Journal of Monetary Economics*, Vol. 130, p.p. 120-136.
- Pesaran, M., Schuermann, T., Treutler, B.J., and Weiner, S. M., 2006. Macroeconomic Dynamics and Credit Risk: A Global Perspective. *Journal of Money, Credit and Banking*, Vol. 38 (5), pp. 1211-1261.
- Plagborg-Møller, M., Wolf, C.K., 2021. Local Projections and VARs Estimate the Same Impulse Responses. *Econometrica*, Vol. 89(2), p.p. 955-980.
- Shapiro, A. 2022. How Much Do Supply and Demand Drive Inflation?. *FRBSF Economic Letter*, Vol. 2022(15), Federal Reserve Bank of San Francisco, p.p. 1-06.
- Subrahmanyam, M. G., Yongjun Tang, D., Qian Wang, Sarah., 2014. Does the Tail Wag the Dog?: The Effect of Credit Default Swaps on Credit Risk. *The Review of Financial Studies*, Vol. 27(10), p.p. 2926–60.
- Stock, J.H., Watson, M.W., 2018. Identification and Estimation of Dynamic Causal Effects in Macroeconomics Using External Instruments. *Economic Journal*, Vol. 128(610), p.p. 917-948.
- Wright, J. H., 2019. Comment on “Measuring euro area monetary policy”, by C. Altavilla, L. Brugnolini, R. Gürkaynak, G. Ragusa and R. Motto, *Journal of Monetary Economics*, Vol. 108, p.p. 180-184.

1. Appendix

Table A.1: Private and listed firms characteristics

	country	n_firms (units)	assets (units)	leverage (percent)	cash to assets (percent)	profit ratio (percent)	ie_ebitda (percent)
<i>private</i>	DE	203,004	1,123,279	63.14	11.98	9.03	9.92
<i>listed</i>		3,348	24,222,601	54.75	8.70	7.62	13.41
<i>private</i>	ES	915,924	262,925	55.24	10.66	5.27	13.88
<i>listed</i>		60,385	2,244,835	41.92	6.37	4.52	12.77
<i>private</i>	FR	961,654	284,821	56.99	16.53	9.11	5.93
<i>listed</i>		14,371	5,046,534	54.28	12.52	4.94	9.56
<i>private</i>	IT	1,008,457	449,179	73.96	7.55	6.91	8.73
<i>listed</i>		23,849	16,833,790	60.96	4.43	6.10	9.34

Note: The table reports median values for the variable of interest for the period 2014-19.
Source: Orbis.

To re-proportion sample average PDs (weighted by firms' assets) available in Moody's to the population of firms in each country, the share of employment of each firm size class (available in the Eurostat, Structural Business Statistics) is used as weight. In formula:

$$PD^{na} = \left\{ \sum_{size\ class} \left[\sum_i^n PD_{i,size\ class} * \frac{assets_i}{assets_{size\ class}} \right] * empty\ share_{size\ class}^{pop} \right\} \quad (A.1)$$

Table A.2: Share of persons employed by firms' size class

	total	micro	SMEs	large
Germany	1.00	0.19	0.43	0.37
Spain	1.00	0.38	0.34	0.28
France	1.00	0.25	0.30	0.47
Italy	1.00	0.44	0.33	0.21
median	1.00	0.32	0.33	0.32

Note: The median share of persons employed in the non-financial business economy for the years 2014-2019 (Eurostat, Structural Business Statistics Data). The data is broken down by firms' size classes with micro firms having 0 to 9 persons employed, SMEs from 10 to 250 and large firms more than 250.
Source: Eurostat.

Table A.3: Mapping of NACE codes into eight sectors

Code	Economic Area	Mapping in 8 economic aggregates
A	Agriculture, Forestry and Fishing	agriculture and mining
B	Mining and Quarrying	agriculture and mining
C	Manufacturing	industrial
D	Electricity, Gas, Steam and Air Conditioning Supply	energy and utility
E	Water Supply; Sewerage, Waste Management and Remediation Activities	energy and utility
F	Construction	construction and real estate
G	Wholesale and Retail Trade; Repair of Motor Vehicles and Motorcycles	trade
H	Transportation and Storage	transportation
I	Accommodation and Food Service Activities	tourism, recreation other services
J	Information and Communication	information, scientific and health services
K	Financial and Insurance Activities	excluded
L	Real Estate Activities	construction and real estate
M	Professional, Scientific and Technical Activities	information, scientific and health services
N	Administrative and Support Service Activities	information, scientific and health services
O	Public Administration and Defence; Compulsory Social Security	excluded
P	Education	information, scientific and health services
Q	Human Health and Social Work Activities	information, scientific and health services
R	Arts, Entertainment and Recreation	tourism, recreation other services
S	Other Service Activities	tourism, recreation other services
T	Activities of Households as Employers	excluded
U	Activities of Extraterritorial Organisations and Bodies	excluded

Note: Statistical classification of economic activities in the European Community Rev. 2 (2008): Level 1 Codes.

Table A.4 The role of firm characteristics: age

Variable	h = 4	h = 8
demand_shock_hicp	-0.0032 (0.0030)	0.0072 * (0.0024)
demand_shock_hicp x d_young	0.0032 ** (0.0006)	0.0025 (0.0011)
supply_shock_hicp	0.0199 *** (0.0006)	-0.0038 ** (0.0008)
supply_shock_hicp x d_young	0.0027 ** (0.0003)	0.0040 ** (0.0007)
mon_policy_shock_OIS_2y	0.0009 *** (0.0000)	0.0004 *** (0.0000)
mon_policy_shock_OIS_2y x d_young	0.0011 * (0.0003)	0.0002 (0.0003)
mon_policy_shock_OIS_5y	0.0007 *** (0.0001)	0.0006 *** (0.0000)
mon_policy_shock_OIS_5y x d_young	0.0003 (0.0000)	-2.68e-5 (0.0001)
mon_policy_shock_OIS_10y	0.0005 *** (0.0000)	0.0003 *** (3.29e-6)
mon_policy_shock_OIS_10y x d_young	-0.0000 (0.0000)	-0.0000 (0.0000)
mon_policy_shock_STOXX50	-0.0037 *** (0.0004)	-0.0044 ** (0.0005)
mon_policy_shock_STOXX50 x d_young	-0.0006 (0.0002)	-0.0007 (0.0004)
<i>Fixed-Effects:</i>	-----	-----
<i>countryisocode</i>	<i>Yes</i>	<i>Yes</i>
<i>size</i>	<i>Yes</i>	<i>Yes</i>
<i>nacerev2corecode4digits</i>	<i>Yes</i>	<i>Yes</i>
S.E.: Clustered	by: coun. & size & nace.	by: coun. & size & nace.
Observations	2,123,259	1,597,916

Notes: The Table provides estimates of the of the panel local projection model in Equation (2). Estimates are obtained from a sample of about 100.000 firms for each country using one quarter lagged control variables: annual real GDP growth rate, 2-year government bond yield, 5-year government CDS spread, corporate bond yield and change in unemployment rate. The model includes country, firm size class and sectoral fixed effects. Standard errors are clustered. Robust standard errors in parentheses. *, **, and *** indicate significance at the 10%, 5%, and 1% level, respectively.

Source: Data from Moody's Analytics RiskCalc, Altavilla *et al.* (2019) and ECB Statistical Data Warehouse and author's calculations.

Table A.5: The role of firm characteristics: leverage

Variable	h = 4	h = 8
demand_shock_hicp	0.0048 (0.0067)	0.0036 (0.0019)
demand_shock_hicp x d_leverage	0.0075 *** (0.0004)	0.0063 ** (0.0013)
supply_shock_hicp	0.0125 *** (0.0009)	-0.0056 *** (0.0004)
supply_shock_hicp x d_leverage	0.0111 *** (0.0003)	0.0127 ** (0.0013)
mon_policy_shock_OIS_2y	0.0007 *** (0.0000)	0.0007 *** (0.0000)
mon_policy_shock_OIS_2y x d_leverage	0.0017 ** (0.0004)	0.0001 ** (0.0001)
mon_policy_shock_OIS_5y	0.0005 *** (0.0000)	0.0007 *** (0.0000)
mon_policy_shock_OIS_5y x d_leverage	0.0005 (0.0002)	-0.0007 ** (0.0000)
mon_policy_shock_OIS_10y	0.0004 ** (0.0000)	0.0004 *** (0.0000)
mon_policy_shock_OIS_10y x d_leverage	0.0002 (0.0001)	-0.0004 ** (0.0000)
mon_policy_shock_STOXX50	-0.0025 *** (0.0001)	-0.0035 *** (0.0003)
mon_policy_shock_STOXX50 x d_leverage	-0.0027 ** (0.0006)	-0.0018 (0.0007)
<i>Fixed-Effects:</i>	-----	-----
<i>countryisocode</i>	<i>Yes</i>	<i>Yes</i>
<i>size</i>	<i>Yes</i>	<i>Yes</i>
<i>nacerev2corecode4digits</i>	<i>Yes</i>	<i>Yes</i>
S.E.: Clustered	by: coun. & size & nace.	by: coun. & size & nace.
Observations	1,484,003	1,141,839

Notes: The Table provides estimates of the of the panel local projection model in Equation (2). Estimates are obtained from a sample of about 100.000 firms for each country using one quarter lagged control variables: annual real GDP growth rate, 2-year government bond yield, 5-year government CDS spread, corporate bond yield and change in unemployment rate. The model includes country, firm size class and sectoral fixed effects. Standard errors are clustered. Robust standard errors in parentheses. *, **, and *** indicate significance at the 10%, 5%, and 1% level, respectively.

Source: Data from Moody's Analytics RiskCalc, Altavilla *et al.* (2019) and ECB Statistical Data Warehouse and author's calculations.

Table A.6 The role of firm characteristics: interest expenses to EBITDA

Variable	h = 4	h = 8
demand_shock_hicp	-0.0022 (0.0057)	-0.0052 ** (0.0011)
demand_shock_hicp x d_ie_ebitda	0.0245 ** (0.0049)	0.0519 * (0.0157)
supply_shock_hicp	0.0106 *** (0.0002)	-0.0194 ** (0.0032)
supply_shock_hicp x d_ie_ebitda	0.0343 ** (0.0044)	0.0657 * (0.0172)
mon_policy_shock_OIS_2y	0.0010 ** (0.0001)	0.0006 * (0.0001)
mon_policy_shock_OIS_2y x d_ie_ebitda	0.0018 (0.0009)	-9.88e-5 (0.0009)
mon_policy_shock_OIS_5y	0.0009 *** (0.0001)	0.0012 *** (0.0001)
mon_policy_shock_OIS_5y x d_ie_ebitda	2.93e-5 (0.0002)	-0.0025 ** (0.0003)
mon_policy_shock_OIS_10y	0.0005 *** (0.0001)	0.0007 ** (0.0001)
mon_policy_shock_OIS_10y x d_ie_ebitda	0.0004 (0.0002)	-0.0015 ** (0.0003)
mon_policy_shock_STOXX50	-0.0030 ** (0.0005)	-0.0060 ** (0.0012)
mon_policy_shock_STOXX50 x d_ie_ebitda	-0.0039 ** (0.0005)	0.0064 * (0.0021)
<i>Fixed-Effects:</i>	-----	-----
<i>countryisocode</i>	<i>Yes</i>	<i>Yes</i>
<i>size</i>	<i>Yes</i>	<i>Yes</i>
<i>nacerev2corecode4digits</i>	<i>Yes</i>	<i>Yes</i>
S.E.: Clustered	by: coun. & size & nace.	by: coun. & size & nace.
Observations	1,353,119	1,044,712

Notes: The Table provides estimates of the of the panel local projection model in Equation (2). Estimates are obtained from a sample of about 100.000 firms for each country using one quarter lagged control variables: annual real GDP growth rate, 2-year government bond yield, 5-year government CDS spread, corporate bond yield and change in unemployment rate. The model includes country, firm size class and sectoral fixed effects. Standard errors are clustered. Robust standard errors in parentheses. *, **, and *** indicate significance at the 10%, 5%, and 1% level, respectively.

Source: Data from Moody's Analytics RiskCalc, Altavilla *et al.* (2019) and ECB Statistical Data Warehouse and author's calculations.

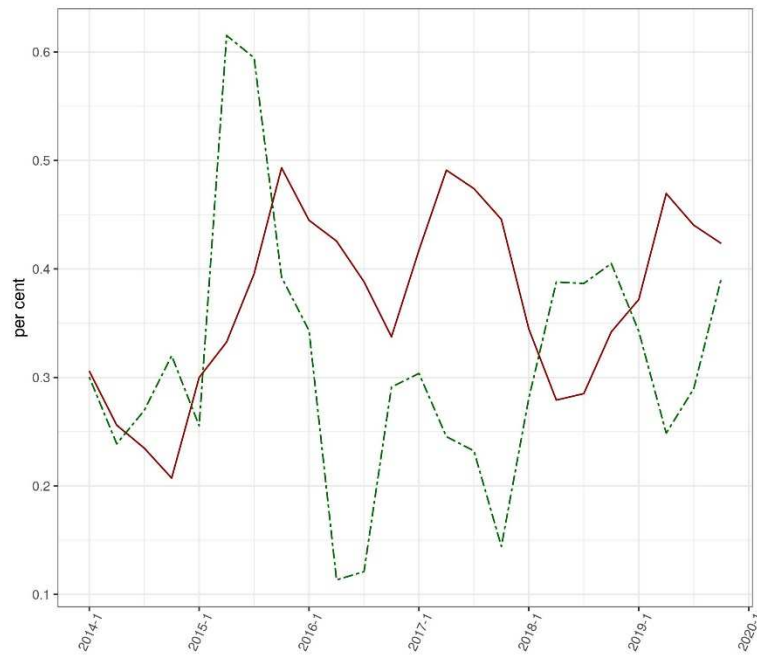
Table A.7 The role of firm characteristics: leverage and cash holdings

Variable	h = 4	h = 8
demand_shock_hicp	0.0058 (0.0075)	0.0037 (0.0018)
demand_shock_hicp x d_leverage	0.0085 *** (0.0006)	0.0080 ** (0.0014)
demand_shock_hicp x d_leverage x d_cash_assets	-0.0074 *** (0.0006)	-0.0135 *** (0.0006)
supply_shock_hicp	0.0122 *** (0.0009)	-0.0056 *** (0.0004)
supply_shock_hicp x d_leverage	0.0124 *** (0.0004)	0.0150 ** (0.0017)
supply_shock_hicp x d_leverage x d_cash_assets	-0.0108 *** (0.0002)	-0.0188 *** (0.0005)
mon_policy_shock_OIS_2y	0.0007 ** (0.0001)	0.0006 *** (0.0004)
mon_policy_shock_OIS_2y x d_leverage	0.0019 * (0.0005)	-0.0007 (0.0003)
mon_policy_shock_OIS_2y x d_leverage x d_cash_assets	-0.0010 (0.0005)	0.0002 (0.0003)
mon_policy_shock_OIS_5y	0.0005 *** (0.0003)	0.0007 *** (0.0003)
mon_policy_shock_OIS_5y x d_leverage	0.0005 (0.0002)	-0.0008** (0.0001)
mon_policy_shock_OIS_5y x d_leverage x d_cash_assets	-0.0002 (0.0002)	0.0008 ** (0.0001)
mon_policy_shock_OIS_10y	0.0003 ** (0.0001)	0.0004 *** (0.0000)
mon_policy_shock_OIS_10y x d_leverage	0.0002 (0.0001)	-0.0004 ** (0.0001)
mon_policy_shock_OIS_10y x d_leverage x d_cash_assets	-0.0002 (0.0007)	0.0005 *** (0.0001)
mon_policy_shock_STOXX50	-0.0025 *** (0.0001)	-0.0035 *** (0.0002)
mon_policy_shock_STOXX50 x d_leverage	-0.0028 ** (0.0006)	-0.0017 (0.0008)
mon_policy_shock_STOXX50 x d_leverage x d_cash_assets	0.0010 (0.0004)	-0.0000 (0.0005)
<i>Fixed-Effects:</i>	-----	-----
<i>countryisocode</i>	<i>Yes</i>	<i>Yes</i>
<i>size</i>	<i>Yes</i>	<i>Yes</i>
<i>nacerev2corecode4digits</i>	<i>Yes</i>	<i>Yes</i>
S.E.: Clustered	by: coun. & size & nace.	by: coun. & size & nace.
Observations	1,437,109	1,108,035

Notes: The Table provides estimates of the of the panel local projection model in Equation (2). Estimates are obtained from a sample of about 100.000 firms for each country using one quarter lagged control variables: annual real GDP growth rate, 2-year government bond yield, 5-year government CDS spread, corporate bond yield and change in unemployment rate. The model includes country, firm size class and sectoral fixed effects. Standard errors are clustered. Robust standard errors in parentheses. *, **, and *** indicate significance at the 10%, 5%, and 1% level, respectively.

Source: Data from Moody's Analytics RiskCalc, Altavilla *et al.* (2019) and ECB Statistical Data Warehouse and author's calculations.

Figure A.1: Macroeconomic shocks: demand and supply-driven inflation shocks
(percent)

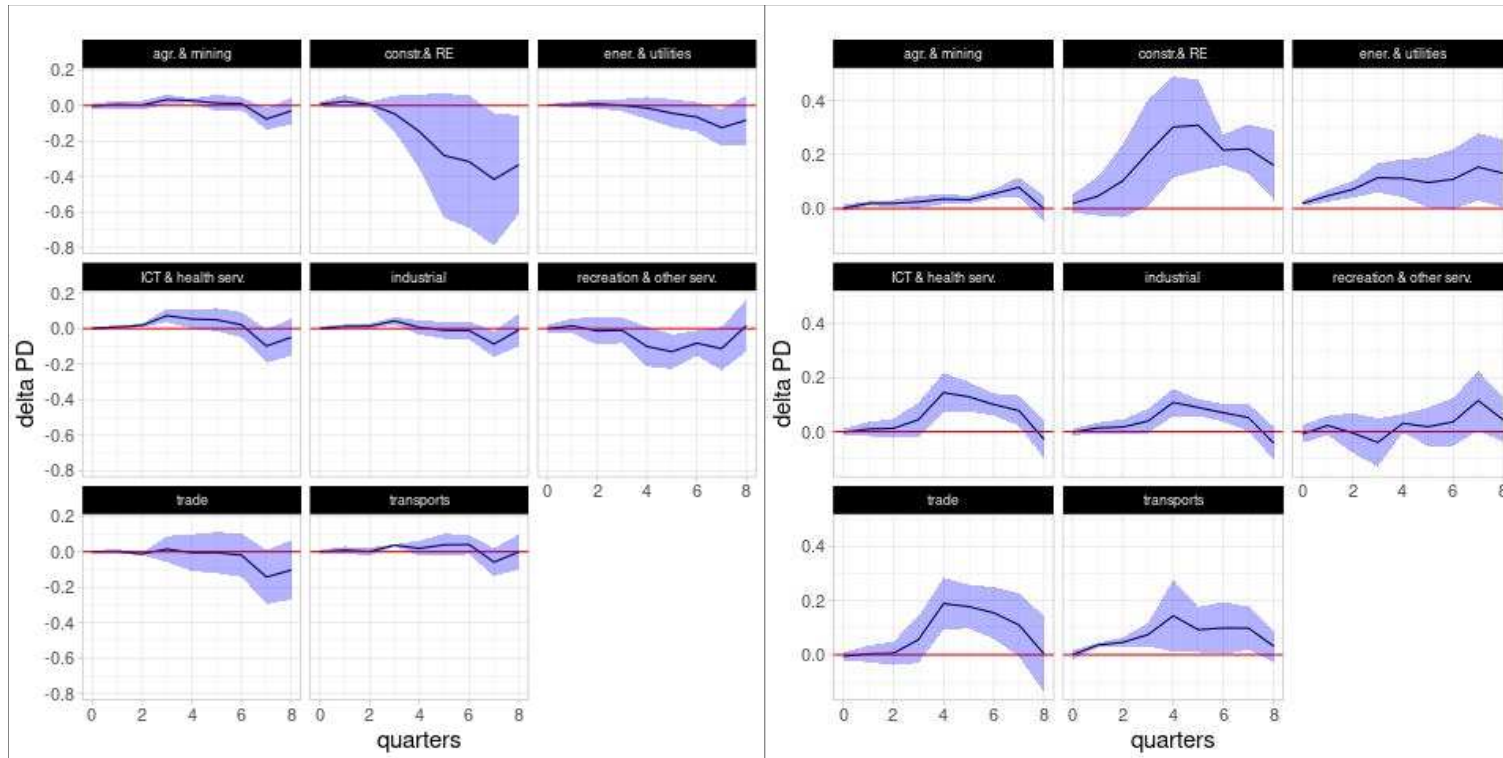


Note: The Figure reports quarterly averages of expansionary demand and contractionary supply-driven inflation shocks from Gonçalves and Koester (2022). Daily shocks are aggregated to quarterly frequency by taking simple averages over the daily shocks within the quarter. The red solid line indicates demand-side shock, and the green dotted line the supply-side shock.

Figure A.2: IRF by sectoral aggregates (1/2)

Panel A: demand shock

Panel B: supply shock



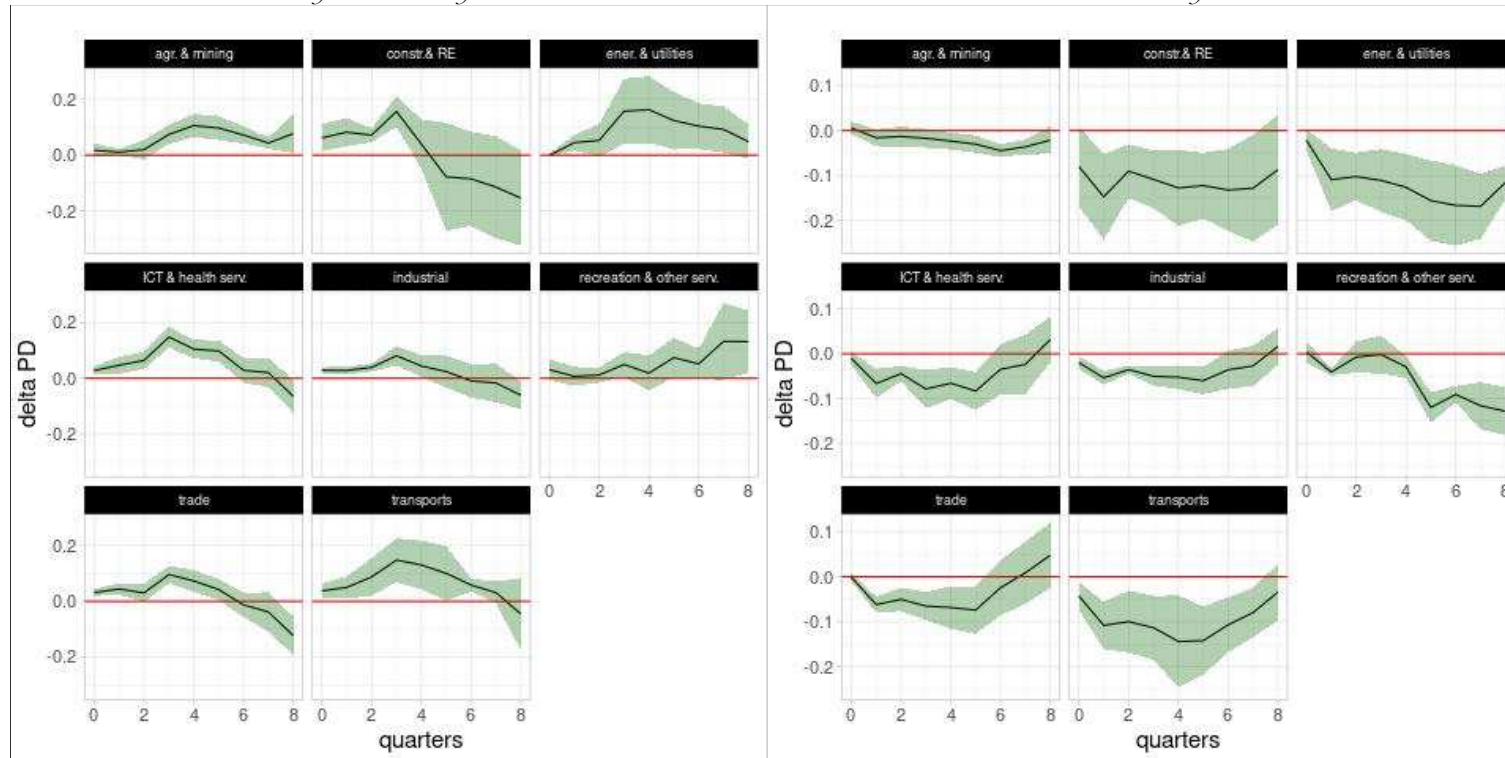
Note: Cumulative impulse response functions from panel local projection models in Equation (1). The response of PDs (line) is rescaled to a one standard deviation of individual shocks; the shaded area indicates 90 percent confidence bands. Estimates are obtained for all countries using one quarter lagged control variables (real GDP growth rate, 2-year government bond yield, 5-year government CDS spread, corporate bond yield, and change in unemployment rate), country-sector fixed effects and clustered robust standard errors. Country-sector average PDs are obtained using a firm's total assets over the total assets of sectors as weights. Firms are assigned to economic sectors using NACE letters: (A, B) agriculture and mining, (C) industrial, (D, E) energy and utility, (F, I) construction and real estate (G) trade, (H) transportation (I, R, S) tourism, recreation other services (J, M, N, Q, P) information, scientific and health services. Confidence intervals at 90 per cent are displayed in the grey shaded area. Demand and supply-driven inflation shocks were obtained from Gonçalves and Koester (2022) while monetary policy shocks to OIS 2, 5, 10 years and the Euro Stoxx 50 are from Altavilla *et al.* (2019). Daily shocks were cumulated at the quarterly frequency as simple averages.

Source: The probabilities of default of non-financial firms in euro area countries are from Moody's and the macro-financial control variables are from the ECB Statistical Data.

Figure A.2: IRF by sectoral aggregates (2/2)

Panel C: monetary shock OIS 2y

Panel D: monetary shock Euro Stoxx 50



Note: Cumulative impulse response functions from panel local projection models in Equation (1). The response of PDs (line) is rescaled to a one standard deviation of individual shocks; the shaded area indicates 90 percent confidence bands. Estimates are obtained for all countries using one quarter lagged control variables (real GDP growth rate, 2-year government bond yield, 5-year government CDS spread, corporate bond yield, and change in unemployment rate), country-sector fixed effects and clustered robust standard errors. Country-sector average PDs are obtained using a firm's total assets over the total assets of sectors as weights. Firms are assigned to economic sectors using NACE letters: (A, B) agriculture and mining, (C) industrial, (D, E) energy and utility, (F, L) construction and real estate (G) trade, (H) transportation (I, R, S) tourism, recreation other services (J, M, N, Q, P) information, scientific and health services. Confidence intervals at 90 per cent are displayed in the grey shaded area. Demand and supply-driven inflation shocks were obtained from Gonçalves and Koester (2022) while monetary policy shocks to OIS 2, 5, 10 years and the Euro Stoxx 50 are from Altavilla *et al.* (2019). Daily shocks were cumulated at the quarterly frequency as simple averages.

Source: The probabilities of default of non-financial firms in euro area countries are from Moody's and the macro-financial control variables are from the ECB Statistical Data.

RECENTLY PUBLISHED “TEMI” (*)

- N. 1436 – *Connecting the dots: the network nature of shocks propagation in credit markets*, by Stefano Pietrosanti and Edoardo Rainone (December 2023).
- N. 1437 – *Inflation expectations and misallocation of resources: evidence from Italy*, by Tiziano Ropele, Yuriy Gorodnichenko and Olivier Coibion (December 2023).
- N. 1438 – *Women in economics: the role of gendered references at entry in the profession*, by Audinga Baltrunaite, Alessandra Casarico and Lucia Rizzica. (February 2024).
- N. 1439 – *Procuring survival*, by Matilde Cappelletti, Leonardo M. Giuffrida and Gabriele Rovigatti. (February 2024).
- N. 1440 – *Estimating the returns to occupational licensing: evidence from regression discontinuities at the bar exam*, by Omar Bamieh, Andrea Cintolesi and Mario Pagliero. (February 2024).
- N. 1441 – *Household perceived sources of business cycle fluctuations: a tale of supply and demand*, by Clodomiro Ferreira and Stefano Pica. (February 2024).
- N. 1442 – *Aggregate uncertainty, HANK, and the ZLB*, by Alessandro Lin and Marcel Peruffo (March 2024).
- N. 1443 – *Monetary policy under natural disaster shocks*, by Alessandro Cantelmo, Nikos Fatouros, Giovanni Melina and Chris Papageorgiou (March 2024).
- N. 1444 – *Endogenous job destruction risk and aggregate demand shortages*, by Nicolò Gnoco (March 2024).
- N. 1445 – *Carbon taxes around the world: cooperation, strategic interactions, and spillovers*, by Alessandro Moro and Valerio Nispi Landi (March 2024).
- N. 1446 – *Nowcasting Italian GDP growth: a Factor MIDAS approach*, by Donato Ceci, Orest Prifti and Andrea Silvestrini (March 2024).
- N. 1447 – *The green sin: how exchange rate volatility and financial openness affect green premia*, by Alessandro Moro and Andrea Zaghini (March 2024).
- N. 1448 – *Oil price shocks in real time*, by Andrea Gazzani, Fabrizio Venditti and Giovanni Veronese (March 2024).
- N. 1449 – *Market perceptions, monetary policy, and credibility*, by Vincenzo Cuciniello (March 2024).
- N. 1450 – *Energy price shocks, unemployment, and monetary policy*, by Nicolò Gnoco (March 2024).
- N. 1451 – *The impact of hydrogeological events on firms: evidence from Italy*, Stefano Clò, Francesco David and Samuele Segoni (April 2024).
- N. 1452 – *Measuring households’ financial fragilities: an analysis at the intersection of income, financial wealth and debt*, by David Loschiavo, Federico Tullio and Antonietta di Salvatore (April 2024).
- N. 1453 – *Unconventionally green*, Andrea Zaghini (April 2024).
- N. 1454 – *Mobile internet, collateral and banking*, by Angelo D’Andrea, Patrick Hitayezu, Kangni Kpodar, Nicola Limodio and Andrea F. Presbitero (June 2024).
- N. 1455 – *Productivity and entry regulation: evidence from the universe of firms*, by Andrea Cintolesi, Sauro Mocetti and Giacomo Roma (June 2024).
- N. 1456 – *Credit supply and green investments*, by Antonio Accetturo, Giorgia Barboni, Michele Cascarano, Emilia Garcia-Appendini and Marco Tomasi (June 2024).
- N. 1457 – *The structural Theta method and its predictive performance in the M4-Competition*, by Giacomo Sbrana and Andrea Silvestrini (June 2024).

(*) Requests for copies should be sent to:

Banca d’Italia – Servizio Studi di struttura economica e finanziaria – Divisione Biblioteca e Archivio storico – Via Nazionale, 91 – 00184 Rome – (fax 0039 06 47922059). They are available on the Internet www.bancaditalia.it.

2022

- ANDINI M., M. BOLDRINI, E. CIANI, G. DE BLASIO, A. D'IGNAZIO and A. PALADINI, *Machine learning in the service of policy targeting: the case of public credit guarantees*, Journal of Economic Behavior & Organization, v. 198, pp. 434-475, **WP 1206 (February 2019)**.
- ANGELICO C., J. MARCUCCI, M. MICCOLI and F. QUARTA, *Can we measure inflation expectations using twitter?*, Journal of Econometrics, v. 228, 2, pp. 259-277, **WP 1318 (February 2021)**.
- BARTOCCI A., A. NOTARPIETRO and M. PISANI, *Covid-19 shock and fiscal-monetary policy mix in a monetary union*, Economic challenges for Europe after the pandemic, Springer Proceedings in Business and Economics, Berlin-Heidelberg, Springer, **WP 1313 (December 2020)**.
- BOTTERO M., C. MINOIU, J. PEYDRÒ, A. POLO, A. PRESBITERO and E. SETTE, *Expansionary yet different: credit supply and real effects of negative interest rate policy*, Journal of Financial Economics, v. 146, 2, pp. 754-778, **WP 1269 (March 2020)**.
- BRONZINI R., A. D'IGNAZIO and D. REVELLI, *Financial structure and bank relationships of Italian multinational firms*, Journal of Multinational Financial Management, v. 66, Article 100762, **WP 1326 (March 2021)**.
- CANTELMO A., *Rare disasters, the natural interest rate and monetary policy*, Oxford Bulletin of Economics and Statistics, v. 84, 3, pp. 473-496, **WP 1309 (December 2020)**.
- CARRIERO A., F. CORSELLO and M. MARCELLINO, *The global component of inflation volatility*, Journal of Applied Econometrics, v. 37, 4, pp. 700-721, **WP 1170 (May 2018)**.
- CIAPANNA E. and G. ROVIGATTI, *The grocery trolley race in times of Covid-19. Evidence from Italy*, Italian Economic Journal / Rivista italiana degli economisti, v. 8, 2, pp. 471-498, **WP 1341 (June 2021)**.
- CONTI A. M., A. NOBILI and F. M. SIGNORETTI, *Bank capital requirement shocks: a narrative perspective*, European Economic Review, v.151, Article 104254, **WP 1199 (November 2018)**.
- FAIELLA I. and A. MISTRETTA, *The net zero challenge for firms' competitiveness*, Environmental and Resource Economics, v. 83, pp. 85-113, **WP 1259 (February 2020)**.
- FERRIANI F. and G. VERONESE, *Hedging and investment trade-offs in the U.S. oil industry*, Energy Economics, v. 106, Article 105736, **WP 1211 (March 2019)**.
- GUISO L., A. POZZI, A. TSOY, L. GAMBACORTA and P. E. MISTRULLI, *The cost of steering in financial markets: evidence from the mortgage market*, Journal of Financial Economics, v.143, 3, pp. 1209-1226, **WP 1252 (December 2019)**.
- LAMORGESE A. and D. PELLEGRINO, *Loss aversion in housing appraisal: evidence from Italian homeowners*, Journal of Housing Economics, v. 56, Article 101826, **WP 1248 (November 2019)**.
- LI F., T. MÄKINEN, A. MERCATANTI and A. SILVESTRINI, *Causal analysis of central bank holdings of corporate bonds under interference*, Economic Modelling, v.113, Article 105873, **WP 1300 (November 2020)**.
- LOBERTO M., A. LUCIANI and M. PANGALLO, *What do online listings tell us about the housing market?*, International Journal of Central Banking, v. 18, 4, pp. 325-377, **WP 1171 (April 2018)**.
- MIRENDA L., M. SAURO and L. RIZZICA, *The economic effects of mafia: firm level evidence*, American Economic Review, vol. 112, 8, pp. 2748-2773, **WP 1235 (October 2019)**.
- MOCETTI S., G. ROMA and E. RUBOLINO, *Knocking on parents' doors: regulation and intergenerational mobility*, Journal of Human Resources, v. 57, 2, pp. 525-554, **WP 1182 (July 2018)**.
- PERICOLI M. and M. TABOGA, *Nearly exact Bayesian estimation of non-linear no-arbitrage term-structure models*, Journal of Financial Econometrics, v. 20, 5, pp. 807-838, **WP 1189 (September 2018)**.
- ROSSI P. and D. SCALISE, *Financial development and growth in European regions*, Journal of Regional Science, v. 62, 2, pp. 389-411, **WP 1246 (November 2019)**.
- SCHIVARDI F., E. SETTE and G. TABELLINI, *Credit misallocation during the European financial crisis*, Economic Journal, v. 132, 641, pp. 391-423, **WP 1139 (September 2017)**.
- TABOGA M., *Cross-country differences in the size of venture capital financing rounds: a machine learning approach*, Empirical Economics, v. 62, 3, pp. 991-1012, **WP 1243 (November 2019)**.

2023

- APRIGLIANO V., S. EMILIOZZI, G. GUAITOLI, A. LUCIANI, J. MARCUCCI and L. MONTEFORTE, *The power of text-based indicators in forecasting Italian economic activity*, International Journal of Forecasting, v. 39, 2, pp. 791-808, **WP 1321 (March 2021)**.
- BARTOCCI A., A. NOTARPIETRO and M. PISANI, *Non-standard monetary policy measures in non-normal times*, International Finance, v. 26, 1, pp. 19-35, **WP 1251 (November 2019)**.

- CAPPELLETTI G. and P. E. MISTRULLI, *The role of credit lines and multiple lending in financial contagion and systemic events*, Journal of Financial Stability, v. 67, Article 101141, **WP 1123 (June 2017)**.
- CECI D. and A. SILVESTRINI, *Nowcasting the state of the Italian economy: the role of financial markets*, Journal of Forecasting, v. 42, 7, pp. 1569-1593, **WP 1362 (February 2022)**.
- CIAPANNA E., S. MOCETTI and A. NOTARPIETRO, *The macroeconomic effects of structural reforms: an empirical and model-based approach*, Economic Policy, v. 38, 114, pp. 243-285, **WP 1303 (November 2020)**.
- CORNELI F., *Sovereign debt maturity structure and its costs*, International Tax and Public Finance, v. 31, 1, pp. 262-297, **WP 1196 (November 2018)**.
- DAURICH D., S. DI ADDARIO and R. SAGGIO, *The macroeconomic effects of structural reforms: an empirical and model-based approach*, Review of Economic Studies, v. 90, 6, pp. 2880–2942, **WP 1390 (November 2022)**.
- DI ADDARIO S., P. KLINE, R. SAGGIO and M. SØLVSTEN, *The effects of partial employment protection reforms: evidence from Italy*, Journal of Econometrics, v. 233, 2, pp. 340-374, **WP 1374 (June 2022)**.
- FERRARI A. and V. NISPI LANDI, *Toward a green economy: the role of central bank's asset purchases*, International Journal of Central Banking, v. 19, 5, pp. 287-340, **WP 1358 (February 2022)**.
- FERRIANI F., *Issuing bonds during the Covid-19 pandemic: was there an ESG premium?*, International Review of Financial Analysis, v. 88, Article 102653, **WP 1392 (November 2022)**.
- GIORDANO C., *Revisiting the real exchange rate misalignment-economic growth nexus via the across-sector misallocation channel*, Review of International Economics, v. 31, 4, pp. 1329-1384, **WP 1385 (October 2022)**.
- GUGLIELMINETTI E., M. LOBERTO and A. MISTRETTA, *The impact of COVID-19 on the European short-term rental market*, Empirica, v. 50, 3, pp. 585-623, **WP 1379 (July 2022)**.
- LILLA F., *Volatility bursts: a discrete-time option model with multiple volatility components*, Journal of Financial Econometrics, v. 21, 3, pp. 678-713, **WP 1336 (June 2021)**.
- LOBERTO M., *Foreclosures and house prices*, Italian Economic Journal / Rivista italiana degli economisti, v. 9, 1, pp. 397-424, **WP 1325 (March 2021)**.
- LOMBARDI M. J., M. RIGGI and E. VIVIANO, *Worker's bargaining power and the Phillips curve: a micro-macro analysis, and wages*, Journal of the European Economic Association, v. 21, 5, pp. 1905–1943, **WP 1302 (November 2020)**.
- NERI S., *Long-term inflation expectations and monetary policy in the Euro Area before the pandemic*, European Economic Review, v. 154, Article 104426, **WP 1357 (December 2021)**.
- ORAME A., *Bank lending and the European debt crisis: evidence from a new survey*, International Journal of Central Banking, v. 19, 1, pp. 243-300, **WP 1279 (June 2020)**.
- RIZZICA L., G. ROMA and G. ROVIGATTI, *The effects of shop opening hours deregulation: evidence from Italy*, The Journal of Law and Economics, v. 66, 1, pp. 21-52, **WP 1281 (June 2020)**.
- TANZI G. M., *Scars of youth non-employment and labour market conditions*, Italian Economic Journal / Rivista italiana degli economisti, v. 9, 2, pp. 475-499, **WP 1312 (December 2020)**.

2024

- BRANZOLI N., R. GALLO, A. ILARI and D. PORTIOLI, *Central banks' corporate asset purchase programmes and risk-taking by bond funds in the aftermath of market stress*, Journal of Financial Stability, v. 72, Article 101261, **WP 1404 (March 2023)**.
- BRANZOLI N., E. RAINONE and I. SUPINO, *The role of banks' technology adoption in credit markets during the pandemic*, Journal of Financial Stability, v. 71, Article 101230, **WP 1406 (March 2023)**.
- BUONO I., F. CORNELI and E. DI STEFANO, *Capital inflows to emerging countries and their sensitivity to the global financial cycle*, International Finance, v. 27,2, pp. 17-34, **WP 1262 (February 2020)**.
- DEL PRETE S., G. PAPINI and M. TONELLO, *Gender quotas, board diversity and spillover effects. Evidence from Italian banks*, Journal of Economic Behavior & Organization, v. 221, pp. 148-173, **WP 1395 (December 2022)**.
- DE MARCHI R. and A. MORO, *Forecasting fiscal crises in emerging markets and low-income countries with machine learning models*, Open Economies Review, v. 35, 1, pp. 189-213, **WP 1405 (March 2023)**.
- FERRARI A. and V. NISPI LANDI, *Whatever it takes to save the planet? Central banks and unconventional green policy*, Macroeconomic Dynamics, v. 28, 2, pp. 299-324, **WP 1320 (February 2021)**.
- FLACCADORO M., *Exchange rate pass-through in small, open, commodity-exporting economies: lessons from Canada*, Journal of International Economics, v. 148, Article 103885, **WP 1368 (May 2022)**.
- MORO A. and V. NISPI LANDI, *The external financial spillovers of CBDCs*, Journal of Economic Dynamics and Control, v. 159, Article 104801, **WP 1416 (July 2023)**.

FORTHCOMING

- BALTRUNAITE A., M. CANNELLA, S. MOCETTI and G. ROMA, *Board composition and performance of state-owned enterprises: quasi experimental evidence*, *The Journal of Law, Economics, and Organization*, **WP 1328 (April 2021)**.
- BENVENUTI M. and S. DEL PRETE, *The evolution of banking competition in italian credit markets using a profit elasticity approach*, *Italian Economic Journal / Rivista italiana degli economisti*, **WP 1237 (October 2019)**.
- CIANI E., A. GROMPONE and E. OLIVIERI, *Jobs for the long-term unemployed: place-based policies in depressed areas*, *Italian Economic Journal / Rivista italiana degli economisti*, **WP 1249 (November 2019)**.
- CUCINIELLO V. and N. DI IASIO, *Determinants of the credit cycle: a flow analysis of the extensive margin*, *Journal of Money, Credit and Banking*, **WP 1266 (March 2020)**.
- FLACCADORO M., *Exchange rate pass-through in small, open, commodity-exporting economies: lessons from Canada*, *Journal of International Economics*, **WP 1365 (April 2022)**.
- GAUTIER E., C. CONFLITTI, R. FABER, B. FABO, L. FADEJEVA, V. JOUVANCEAU, J.-O. MENZ, T. MESSNER, P. PETROULAS, P. ROLDAN-BLANCO, F. RUMLER, S. SANTORO, E. WIELAND and H. ZIMMER, *New facts on consumer price rigidity in the euro area*, *American Economic Journal: Macroeconomics*, **WP 1375 (July 2022)**.
- LOSCHIAVO D., F. TULLIO and A. DI SALVATORE, *Measuring households' financial fragilities: an analysis at the intersection of income, financial wealth, and debt*, *Review of Income and Wealth*, **WP 1452 (April 2024)**.
- MICHELANGELI V. and E. VIVIANO, *Can internet banking affect households' participation in financial markets and financial awareness?*, *Journal of Money, Credit and Banking*, **WP 1329 (April 2021)**.
- MISTRETTA A., *Synchronization vs transmission: the effect of the German slowdown on the Italian business cycle*, *International Journal of Central Banking*, **WP 1346 (October 2021)**.
- MODENA F., S. PEREDA-FERNANDEZ and G. M. TANZI, *On the design of grant assignment rules*, *Politica economica/Journal of Economic Policy*, **WP 1307 (December 2020)**.
- MORO A., *Optimal policies in a small open economy with an environmental externality and shallow foreign exchange markets*, *Portuguese Economic Journal*, **WP 1348 (October 2021)**.
- RAINONE E., *Reservation rates in interbank money markets*, *Journal of Money, Credit and Banking*, **WP 1160 (February 2021)**.
- RAINONE E., *Real-time identification and high frequency analysis of deposits outflows*, *Journal of Financial Econometrics*, **WP 1319 (December 2017)**.
- ROPELE T., Y. GORODNICHENKO and O. COIBION, *Inflation expectations and misallocation of resources: evidence from Italy*, *American Economic Review: Insights*, **WP 1437 (December 2023)**.